



REPUBLIKA E SHQIPERISE  
MINISTRIA E FINANCEVE  
DREJTORIA E PERGJITHSHME E BORXHIT



**MINISTRIA E FINANCEVE**

**Treguesit e Borxhit – Viti 2009**

**Debt Indicators as of December 31, 2009**

## **Ecuria e borxhit publik gjate vitit 2009**

### **Ndryshimi stokut dhe raportit te tij me PBB-ne**

Stoku i borxhit publik ne fund te vitit 2009 arriti ne 59.68% e PBB. Ne perberjen e ketij stoku perfshihen borxhi me instrumenta financiare te emetuara ne tregun e brendshem 36.30% e PBB dhe borxhi i jashtem 23.38% e PBB.

Siç shihet raporti i stokut te borxhit me PBB ka pesuar rritje si rezultat i rritjes se huamarrjes per plotesimin e nevojave te buxhetit (per shpenzime kapitale). Veçanerisht rritje ka pesuar stoku i borxhit te jashtem, si rezultat i kredise tregtare te marre gjate vitit 2009. Pervec ketyre faktoreve, ne stokun e borxhit te jashtem ne fund te vitit 2009 ndikon edhe zhvleresimi i lekut kundrejt EUR-s ne masen 11.43% kundrejt fundit te vitit 2008.

### **Evoluimi i struktures se stokut te borxhit**

Krahas ndryshimit te raportit te borxhit me PBB, ka evoluar edhe struktura e borxhit publik. Ne fund te vitit 2008, borxhi i brendshem perfaqesonte 67.2% te stokut te borxhit gjithsej, nderkohe qe ne fund te vitit 2009 ai perfaqeson 60.8% te tij. Nderkohe, eshte rritur pesha e borxhit te jashtem nga 32.3% ne fund te vitit 2008, ne 39.2% te stokut te borxhit gjithsej ne fund te vitit 2009.

Ndryshime ka pesuar edhe struktura e *borxhit te brendshem sipas instrumentave*. Si rezultat i politikes se ndjekur nga Ministria e Financave ne drejtim te emetimit te borxhit, pesha e instrumentave afatgjate ka ardhur ne rritje nga nje vit ne tjetrin, gje qe perben nje zhvillim pozitiv. Ben perjashtim viti 2009, gjate te cilit tregu financiar i letrave me vlere ka qene teper i riskuar nga situata e krizes financiare, gje e cila eshte reflektuar ne rritjen e “yield”-eve te letrave me vlere. Per keto arsye nuk ka qene e thjeshte qe te hidhen ne treg instrumenta afatgjate pasi vete tregu ka preferuar te investoje tek instrumentat afatshkurter.

Edhe *struktura e mbajtesve* te borxhit te brendshem ka pesuar ndryshime pozitive. Me konkretisht, ka ardhur ne rnie pesha e mbajtesit kryesor (RZB Bank), dhe ka ardhur ne rritje pesha e kategorise se individeve.

Persa i perket *borxhit te jashtem*, ne fund te 2009-s stoku i tij arriti 267,37 miliard leke, i ndare ne *borxh te jashtem shteteror prej 227.1 miliard leke* dhe *borxh te jashtem te garantuar 40.26 miliard leke*. Borxhi i jashtem ka pesuar rritje jo vetem si rezultat i shteses se kredise sindikale prej 192.6 milion EUR, por edhe si rezultat i ecurise pozitive te disbursimeve per projektet me financim te huaj. Ky eshte nje tregues pozitiv i permiresimit te menaxhimit ne zbatimin e projekteve te huaja, duke çuar ne rritjen e performances se realizimit dhe uljen e kosos se tyre efektive.

Stoku i borxhit te jashtem i ndare *sipas koncesionalitetit* ka pesuar ndryshime ne drejtim te rritjes se kredive te nenshkuara me terma jokoncesionale per financimin e projekteve me rendesi strategjike. Tashme Shqiperia kualifikohet si nje vend me te ardhura mesatare, çka ka sjelle si pasoje edhe uljen e nivelit te koncesionalitetit te kredive te huaja. Si rezultat, kane ndryshuar kushtet e marreveshjeve te kredive dhe te tregut te huamarrjes se jashtme ne pergjithesi. Ne fund te vitit 2009, borxhi me terma koncesionale perfaqeson 53.3% te stokut te borxhit te jashtem, kundrejt 62.7% qe perfaqesonte ne fund te vitit 2008.

Lidhur me strukturen e stokut te borxhit te jashtem sipas normes se interesit, borxhi me interes fiks perfaqeson pjesen me te madhe te borxhit te jashtem. Nderkohe pesha e borxhit te jashtem me interes variabel ka ardhur duke u rritur ne vite per arsye te rritjes se huamarrjes me kushte tregtare.

Ne analizen e borxhit te jashtem sipas monedhave vihet re se dy monedhat kryesore ne borxhin e jashtem jane EUR dhe SDR, te cilat ne 2009 perfaqesojne perkatesisht 55.2% dhe 31.7% te totalit te borxhit te jashtem. Megjithate perqindja e borxhit te jashtem ne SDR ka ardhur duke rene nga nje vit ne tjetrin si rezultat i uljes se huamarrjes nga IDA, ndersa ka ardhur duke u rritur borxhi i jashtem ne EUR. Ky fakt e ben stokun e borxhit te jashtem me te ndjeshem ndaj ndryshimeve te kursit te kembimit Leke/EURO, duke dhene efekte te ndjeshme ne rivleresimin e stokut te borxhit te jashtem ne fund te vitit 2009.

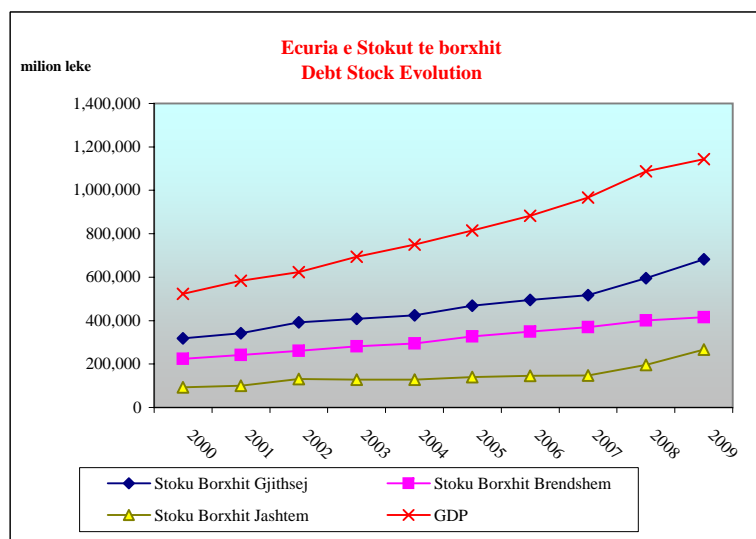
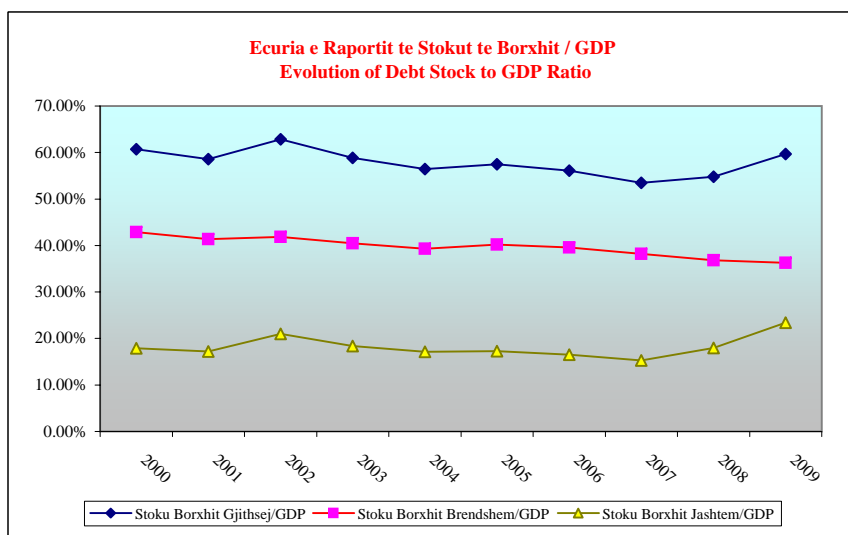
### **Ecuria e koston se sherbimit te borxhit**

Kostoja e sherbimit te borxhit ka ardhur ne rritje. Veçanerisht me ritme te larta jane rritur shpenzimet per interesat e borxhit te jashtem, te cilat ne vitin 2009 jane rritur me 67.5% ne krahasim me vitin 2008, si rezultat i huamarrjes me terma tregtare. Nje rritje prej 10.4% kane pasur edhe shpenzimet per interesa te borxhit te brendshem, si rezultat i rritjes se normave te interesit te huamarrjes vendase, trend qe filloi ne fund te 2008 dhe vazhdoi edhe gjate nje pjese te vitit 2009. Raporti i sherbimit te borxhit me PBB nga 3.27% e PBB ne vitin 2008, arriti ne 3.68% ne fund te vitit 2009.

## Stoku i Borxhit Gjithsej Total Debt Stock

million ALL

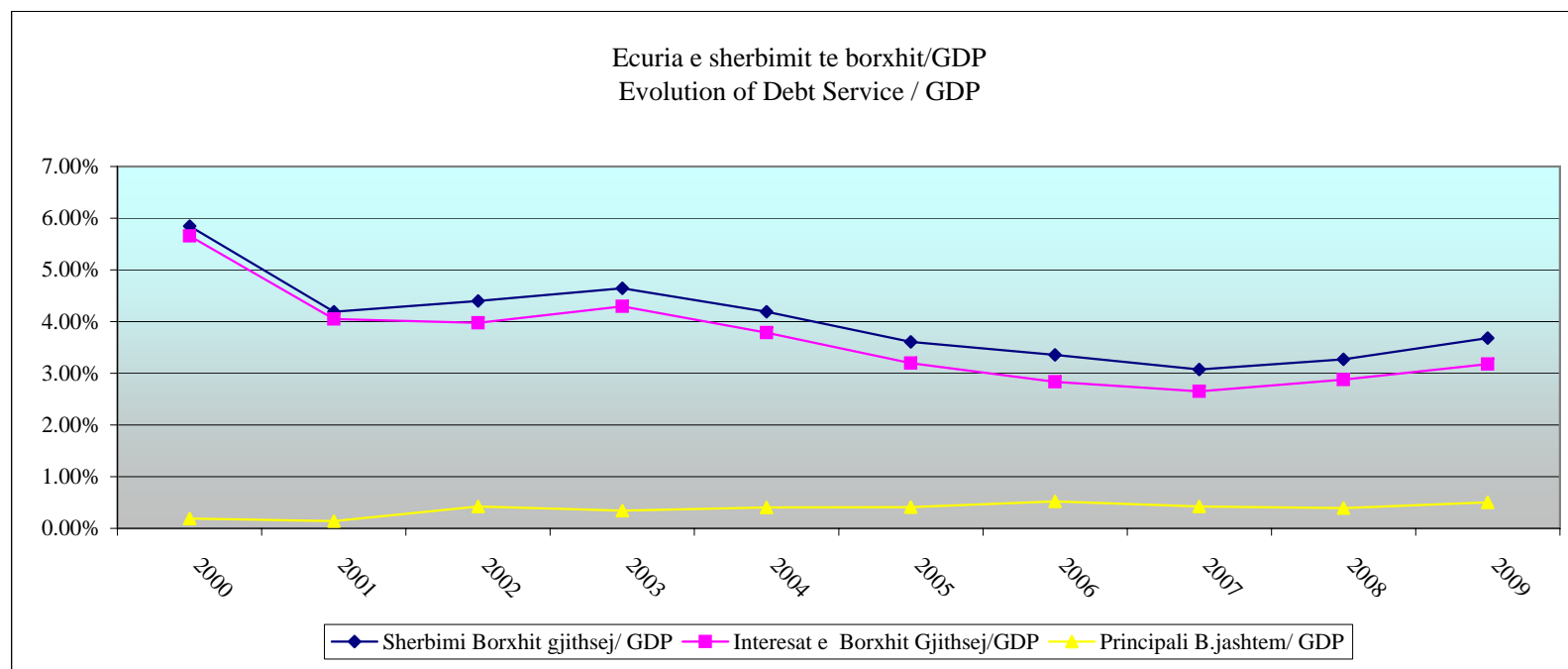
	2000	2001	2002	2003	2004	2005	2006	2007	2008	2009	
<b>Stoku Borxhit Gjithsej</b>	317,659	341,521	391,308	408,300	423,965	468,071	494,668	516,934	595,799	682,397	<b>Total Debt Stock</b>
<b>Stoku Borxhit Brendshem</b>	224,120	241,161	260,752	280,767	295,200	327,353	348,935	369,536	400,456	415,028	<b>Domestic Debt Stock</b>
<b>Stoku Borxhit Jashtem</b>	93,539	100,360	130,556	127,533	128,765	140,718	145,733	147,398	195,343	267,369	<b>External Debt Stock</b>
<b>GDP</b>	523,043	583,369	622,711	694,098	750,785	814,797	882,209	966,651	1,087,867	1,143,373	<b>GDP</b>
<b>Stoku Borxhit Gjithsej/GDP</b>	60.73%	58.54%	62.84%	58.82%	56.47%	57.45%	56.07%	53.48%	54.77%	59.68%	<b>Total Debt Stock/GDP</b>
<b>Stoku Borxhit Brendshem/GDP</b>	42.85%	41.34%	41.87%	40.45%	39.32%	40.18%	39.55%	38.23%	36.81%	36.30%	<b>Domestic Debt Stock/GDP</b>
<b>Stoku Borxhit Jashtem/GDP</b>	17.88%	17.20%	20.97%	18.37%	17.15%	17.27%	16.52%	15.25%	17.96%	23.38%	<b>External Debt Stock/GDP</b>



## Interesat e Borxhit Gjithsej Total Debt Service

ne milion leke

	2000	2001	2002	2003	2004	2005	2006	2007	2008	2009	
<b>Sherbimi Borxhit gjithsej (I+II)</b>	<b>30,572</b>	<b>24,438</b>	<b>27,395</b>	<b>32,225</b>	<b>31,448</b>	<b>29,393</b>	<b>29,596</b>	<b>29,693</b>	<b>35,555</b>	<b>42,061</b>	<b>Total Debt Service (I+II)</b>
<b>Interesat e Borxhit Gjithsej (I)</b>	29,573	23,620	24,762	29,824	28,423	26,029	25,006	25,594	31,307	36,301	<b>Total interests (I)</b>
<b>Interesat e B.Brendshem</b>	28,870	22,528	22,468	28,174	26,711	24,184	22,978	23,499	28,386	31,408	<b>Domestic Debt Interests</b>
<b>Interesat e B.Jashtem</b>	703	1,092	2,294	1,649	1,712	1,845	2,028	2,096	2,921	4,893	<b>External Debt Interests</b>
<b>Principali B.jashtem (II)</b>	999	818	2,632	2,401	3,025	3,364	4,590	4,098	4,248	5,760	<b>Repayments (II)</b>
<b>GDP</b>	523,043	583,369	622,711	694,098	750,785	814,797	882,209	966,651	1,087,867	1,143,373	<b>GDP</b>
<b>Sherbimi Borxhit gjithsej/ GDP</b>	5.85%	4.19%	4.40%	4.64%	4.19%	3.61%	3.35%	3.07%	3.27%	3.68%	<b>Total Debt Service /GDP</b>
<b>Interesat e Borxhit Gjithsej/GDP</b>	5.65%	4.05%	3.98%	4.30%	3.79%	3.19%	2.83%	2.65%	2.88%	3.17%	<b>Total interests/GDP</b>
<b>Interesat e Borxhit Brendshem/GDP</b>	5.52%	3.86%	3.61%	4.06%	3.56%	2.97%	2.60%	2.43%	2.61%	2.75%	<b>Domestic Interests/GDP</b>
<b>Interesat e Borxhit Jashtem/GDP</b>	0.13%	0.19%	0.37%	0.24%	0.23%	0.23%	0.23%	0.22%	0.27%	0.43%	<b>External Interests/GDP</b>
<b>Principali B.jashtem/ GDP</b>	0.19%	0.14%	0.42%	0.35%	0.40%	0.41%	0.52%	0.42%	0.39%	0.50%	<b>Repayments/GDP</b>



**Financimi i brendshem i Deficitit Buxhetor Viti 2009**  
**Domestic Deficit Financing for 2009**

mije ALL

<b>Periudha</b>	<b>Viti 2009</b>	
<b>Financimi i Deficitit</b>	<b>18,667,123.00</b>	Deficit financing
Nga i cili:		of which :
<b>Instrumenta Afatshkurter</b>	<b>10,245,123.00</b>	Short term instruments
- Bono Thesari Leke	13,245,123.00	Tbills
Kredi Direkte	-3,000,000.00	Credit from BOA
<b>Instrumenta Afatgjate</b>	<b>8,422,000.00</b>	Long term instruments
- Oblig.e qeverise 2 vjecare	-483,000.00	2 y bonds
- Oblig.e qeverise 3 vjecare	-5,500,000.00	3 y bonds
- Oblig.e qeverise 5 vjecare	14,405,000.00	5 y bonds
- Oblig.e qeverise 7 vjecare	0.00	7 y bonds
GDP	1,143,373,000	GDP
<b>Financimi i Deficitit / GDP</b>	1.63%	Deficit financing / GDP
<b>Instrumenta Afatshkurter / GDP</b>	0.90%	Short term instruments / GDP
<b>Instrumenta Afatgjate / GDP</b>	0.74%	Long term instruments / GDP

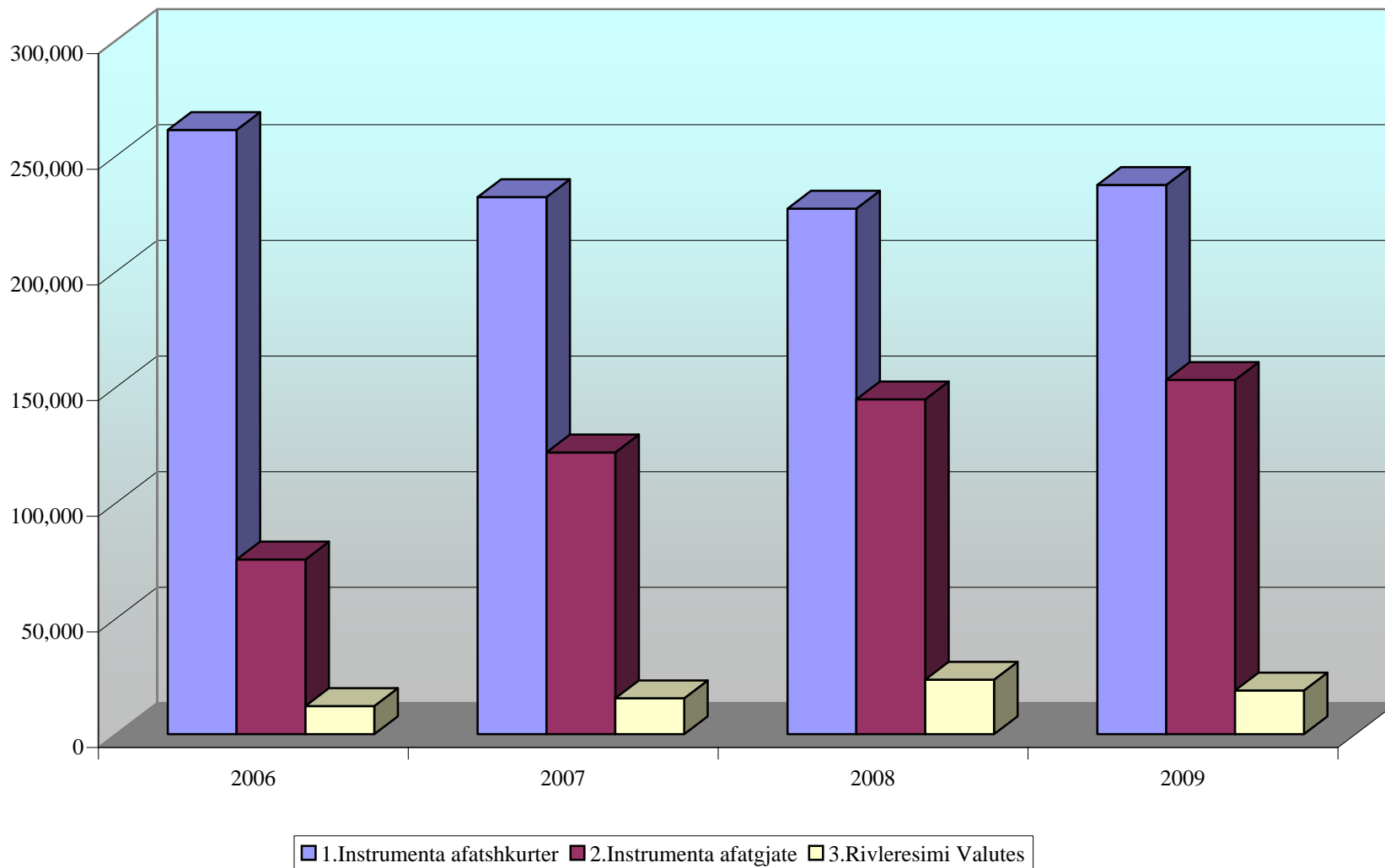
**Borxhi i Brendshem sipas Instrumentave**  
**Domestic Debt Stock by Instruments**

ne milion leke

	31,12,2006		31,12,2007		31,12,2008		31.12.2009		
	Purchase value	%	Purchase value	%	Purchase value	%	Purchase value	%	
<b>Stoku I Borxhit Gjithsej</b>	<b>348,935</b>		<b>369,536</b>		<b>400,456</b>		<b>415,028</b>		<b>Total Debt Stock</b>
<b>I.Borxhi Shteteror</b>	<b>348,935</b>	<b>100.00</b>	<b>369,536</b>	<b>100.00</b>	<b>395,504</b>	<b>98.76</b>	<b>409,501</b>	<b>98.67</b>	<b>I.Public Debt</b>
<b>1.Instrumenta afatshkurter</b>	<b>261,241</b>	<b>74.87</b>	<b>232,211</b>	<b>62.84</b>	<b>224,224</b>	<b>55.99</b>	<b>237,469</b>	<b>57.22</b>	<b>I.Short term Instruments</b>
Bono 3/M	33,188	9.51	30,695	8.31	25,774	6.44	22,870.00	5.51	3 Month Bills
Bono 6/M	65,162	18.67	57,911	15.67	54,631	13.64	47,647.00	11.48	6 Month Bills
Bono 9/M	5,368								
Bono 12/M	157,523	45.14	143,605	38.86	143,819	35.91	166,952.00	40.23	1 Year Bills
<b>2.Instrumenta afatgjate</b>	<b>75,530</b>	<b>21.65</b>	<b>121,820</b>	<b>32.97</b>	<b>144,740</b>	<b>36.14</b>	<b>153,162</b>	<b>36.90</b>	<b>II. Long term Instruments</b>
Oblig.2/Vj	53,120	15.22	66,460	17.98	65,730	16.41	65,247.00	15.72	2 Year Note
Oblig.3/Vj	16,050	4.60	25,250	6.83	21,100	5.27	15,600.00	3.76	3 Year Note
Oblig.5/Vj	6,360	1.82	24,110	6.52	45,910	11.46	60,315.00	14.53	5 Year Note
Oblig.7/Vj	0	0.00	6,000	1.62	12,000	3.00	12,000.00	2.89	7 Year Note
<b>3. Kredi Direkte</b>	<b>0</b>	<b>0.00</b>	<b>0</b>	<b>0.00</b>	<b>3,000</b>	<b>0.75</b>		<b>0.00</b>	<b>Central Bank Credits</b>
<b>4.Rivleresimi Valutes</b>	<b>12,164</b>	<b>3.49</b>	<b>15,505</b>	<b>4.20</b>	<b>23,540</b>	<b>5.88</b>	<b>18,870.00</b>	<b>4.55</b>	<b>Forgn.Ex.Res.Evalu.</b>
<b>II.Borxhi i Garantuar</b>	<b>0.00</b>	<b>0.00</b>	<b>0.00</b>	<b>0.00</b>	<b>4,952</b>	<b>1.24</b>	<b>5,527</b>	<b>1.33</b>	<b>II.Publicly Guaranteed Debt</b>
<b>1. Garanci Treg.Brend.</b>	<b>0.00</b>	<b>0.00</b>	<b>0.00</b>	<b>0.00</b>	<b>4,952</b>	<b>1.24</b>	<b>5,527</b>	<b>1.33</b>	<b>Domestic Guarantees</b>

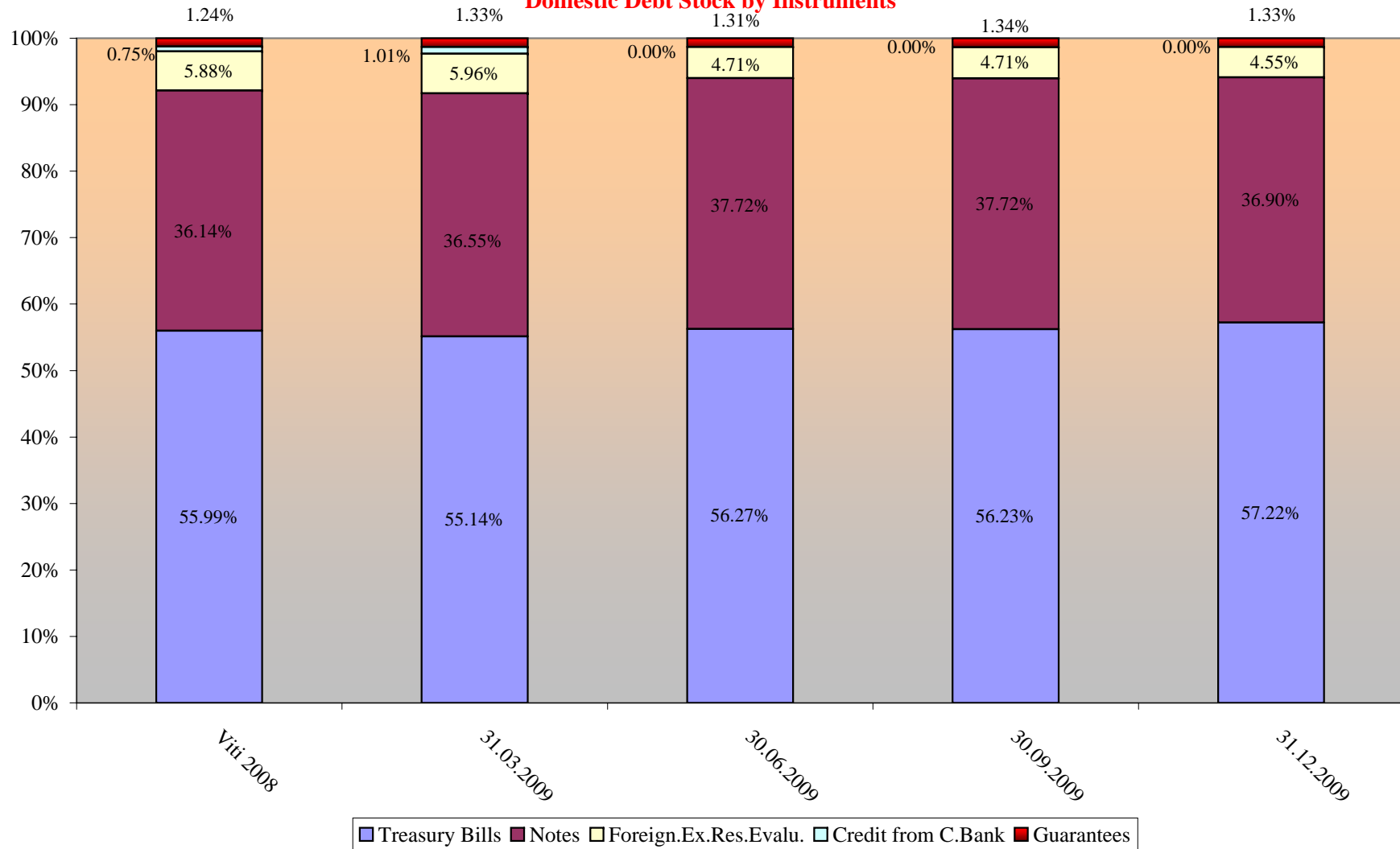
Struktura e Borxhit te Brendshem  
Domestic Debt Structure

million leke

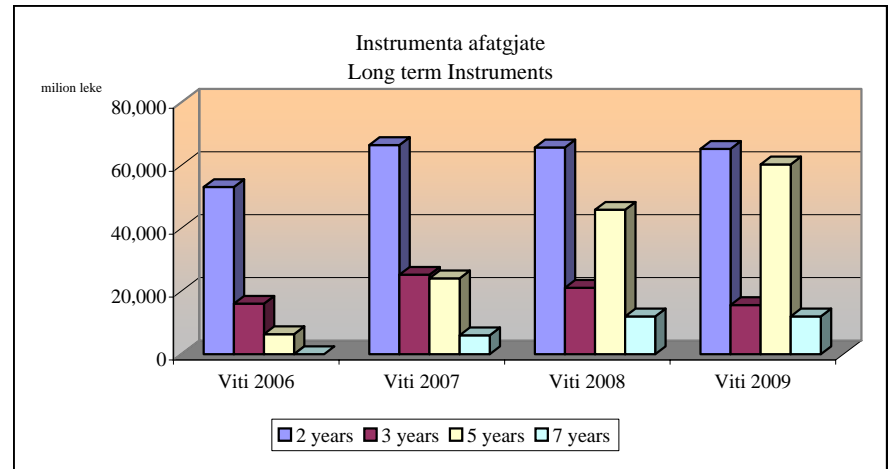
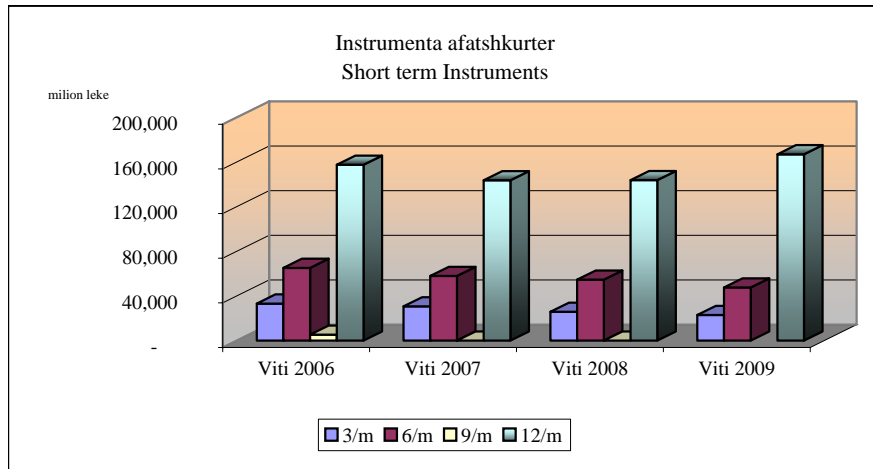




**Stoku i Borxhit te Brendshem sipas instrumentave**  
**Domestic Debt Stock by Instruments**

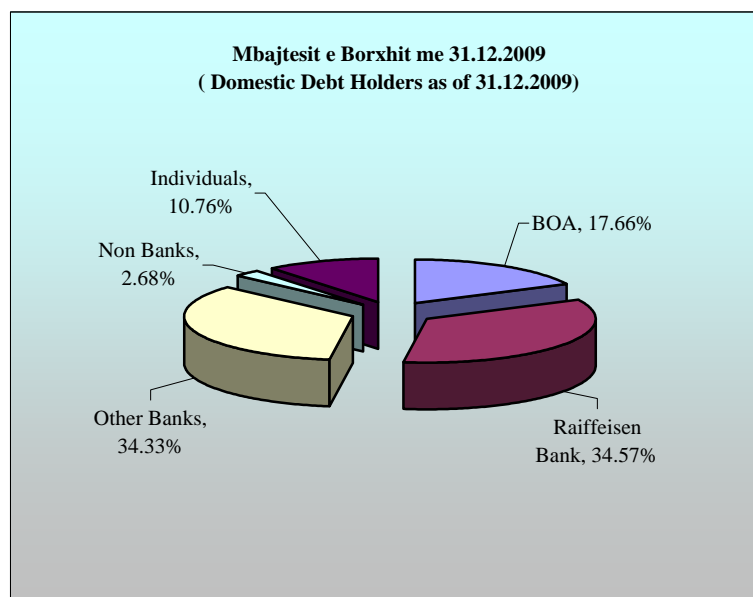
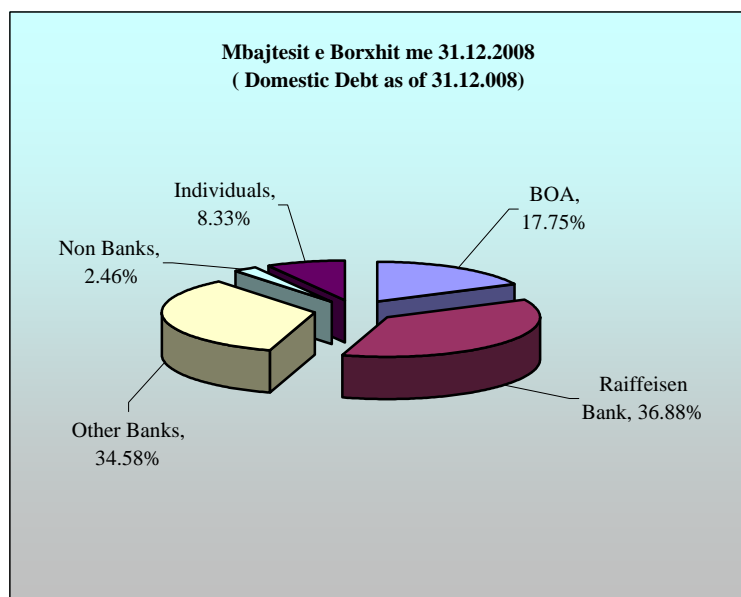


**Ecuria e instrumentave te borxhit te brendshem**  
**Evolution of Domestic Debt Instruments**



**Mbajtesit e Borxhit te Brendshem \***  
**Domestic Debt Holders \***

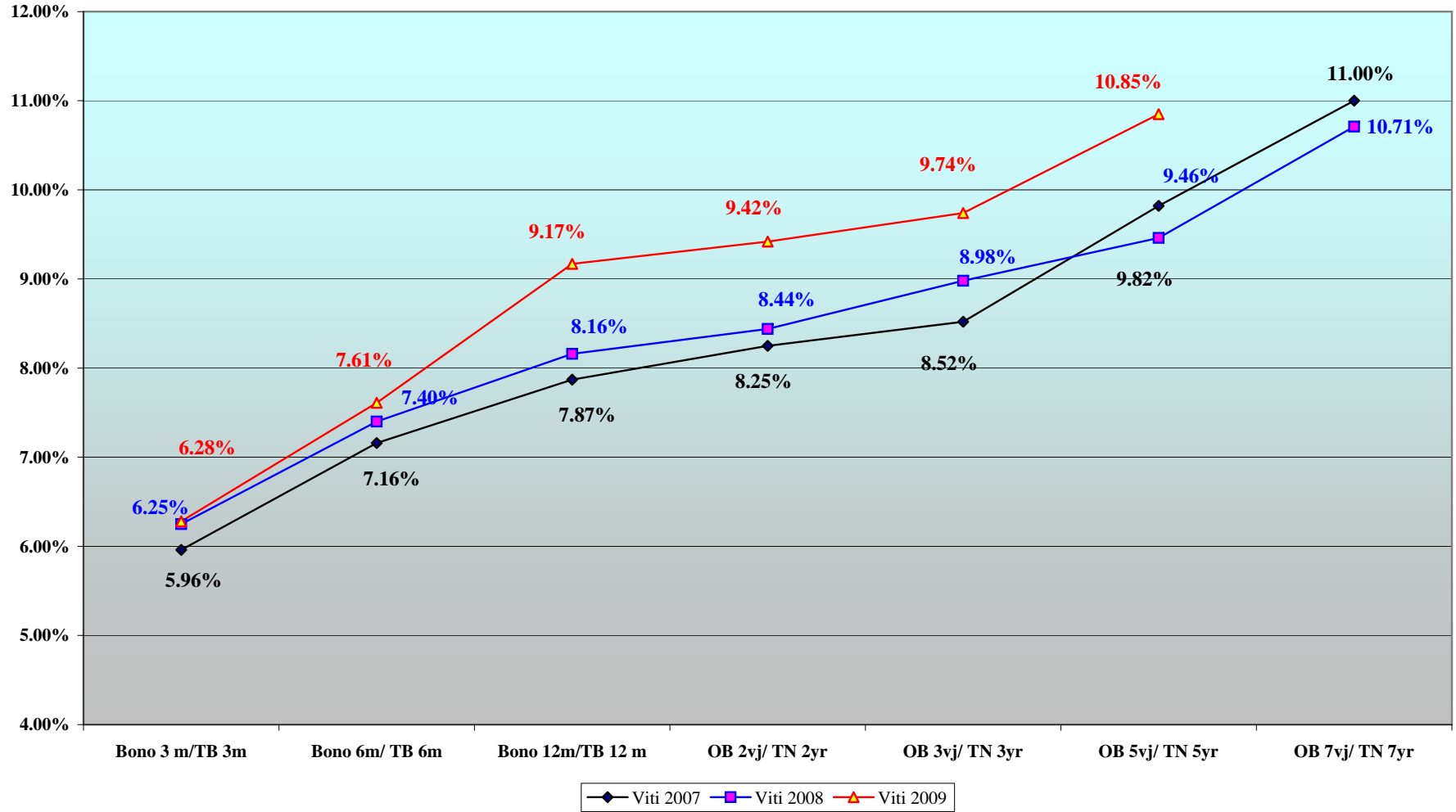
	<b>31.12.2006</b>	<b>31.12.2007</b>	<b>31.12.2008</b>	<b>31.12.2009</b>	
<b>BOA</b>	19.52%	18.49%	17.75%	17.66%	<b>BOA</b>
<b>Raiffeisen Bank</b>	38.53%	35.19%	36.88%	34.57%	<b>Banka Raiffeisen</b>
<b>Other Banks</b>	32.94%	36.73%	34.58%	34.33%	<b>Bankat e tjera</b>
<b>Non Banks</b>	2.00%	1.92%	2.46%	2.68%	<b>Jo Banka</b>
<b>Individuals</b>	7.01%	7.67%	8.33%	10.76%	<b>Individet</b>



\*) **Nuk perfshihen Rivleresimi i valutes dhe Garancite.**  
**Foreing exchange reserves reevaluation and Guarantees are not included**



### Yield Curve Of Albanian Securities



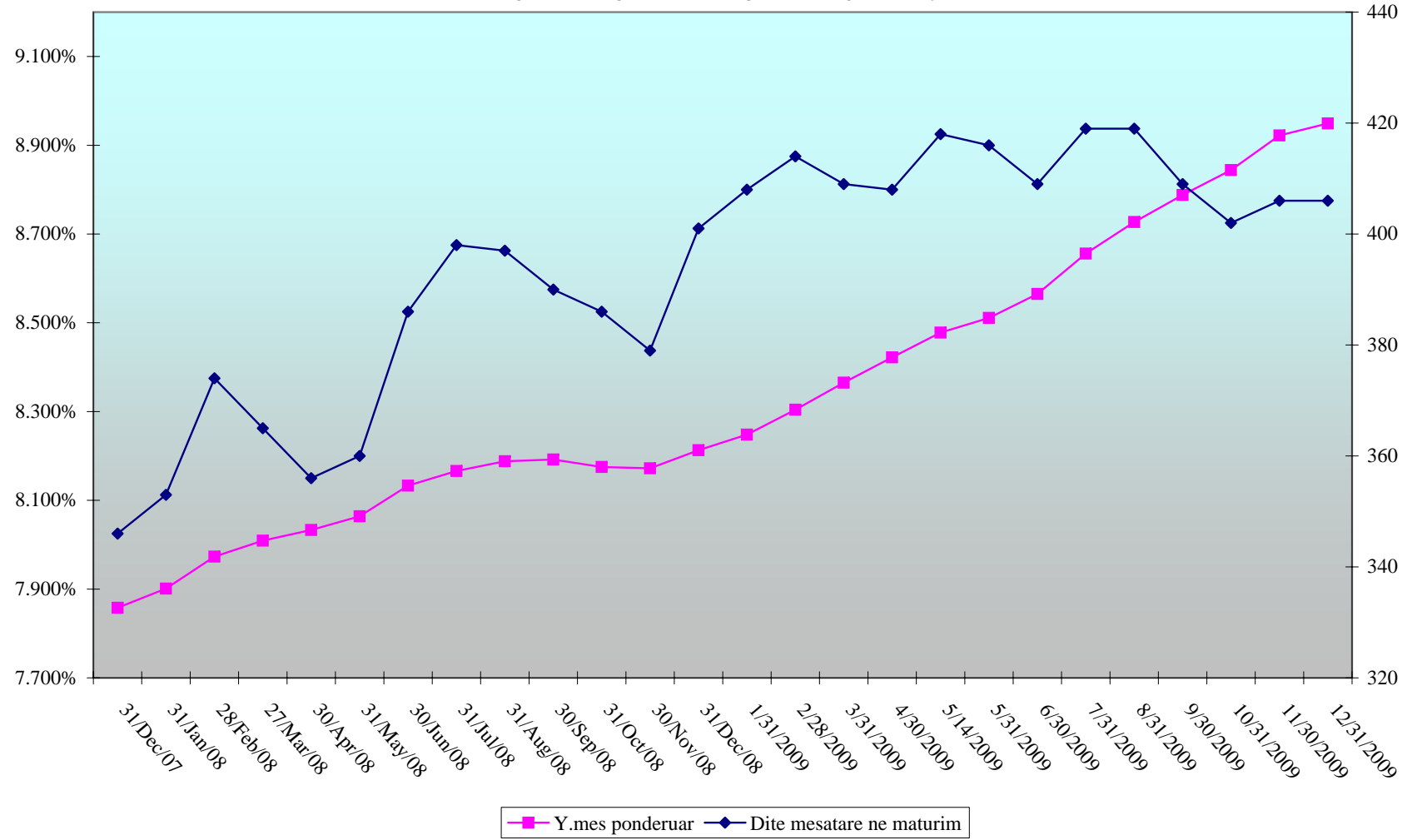
**Dite Mesatare ne Maturim & Yield-i Mesatar i Ponderuar**  
**Weighted Average Maturity & Weighted Average Yield**

	<b>Average Maturity</b>	<b>Average Yield</b>	<b>Averg. Mat Pa BOA</b>	<b>Averg Yield Pa BOA</b>
<b>31.12.2005</b>	<b>195</b>	<b>7.427</b>	<b>223</b>	<b>7.589</b>
<b>31.12.2006</b>	<b>242</b>	<b>6.744</b>	<b>284</b>	<b>6.807</b>
<b>31.12.2007</b>	<b>346</b>	<b>7.858</b>	<b>409</b>	<b>8.070</b>
31.01.2008	353	7.901	415	8.122
28.02.2008	374	7.973	435	8.177
27.03.2008	365	8.009	426	8.216
30.04.2008	356	8.033	415	8.243
31.05.2008	360	8.064	421	8.276
30.06.2008	386	8.133	452	8.354
31.07.2008	398	8.166	462	8.395
31.08.2008	397	8.188	494	8.461
30.09.2008	390	8.192	456	8.422
31.10.2008	386	8.175	450	8.414
30.11.2008	379	8.172	445	8.421
<b>31.12.2008</b>	<b>401</b>	<b>8.213</b>	<b>470</b>	<b>8.461</b>
31.01.2009	408	8.248	475	8.507
29.02.2009	414	8.304	485	8.572
31.03.2009	409	8.365	485	8.647
30.04.2009	408	8.422	482	8.702
31.05.2009	416	8.511	492	8.791
30.06.2009	409	8.565	486	8.844
31.07.2009	419	8.656	494	8.950
31.08.2009	419	8.727	492	9.000
30.09.2009	409	8.788	481	9.068
31.10.2009	402	8.844	471	9.129
30.11.2009	406	8.922	475	9.207
<b>31.12.2009</b>	<b>406</b>	<b>8.949</b>	<b>471</b>	<b>9.236</b>

Letrat me vlere te Qeverise  
 Yield Mesatar & Dite Mesatare ne maturim  
 Albanian Government Securities  
 Weighted Average Yield & Weighted Average Maturity

Yield

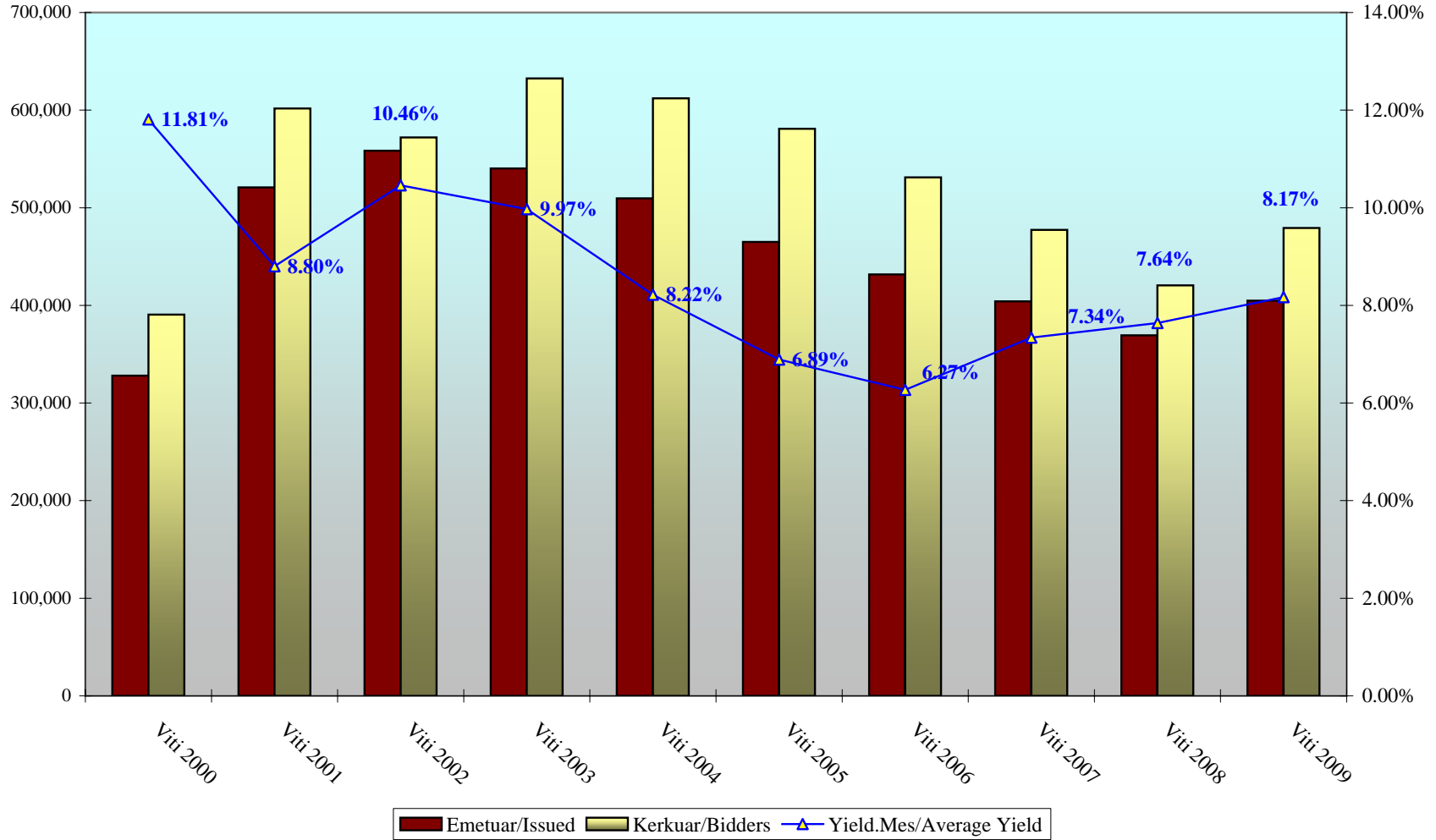
Days



**Letrat me vlere te Qeverise: Emetuar, Kerkuar, Yield Mesatar i Ponderuar**  
**Government Securities: Issued, Bidded, Average Yield**

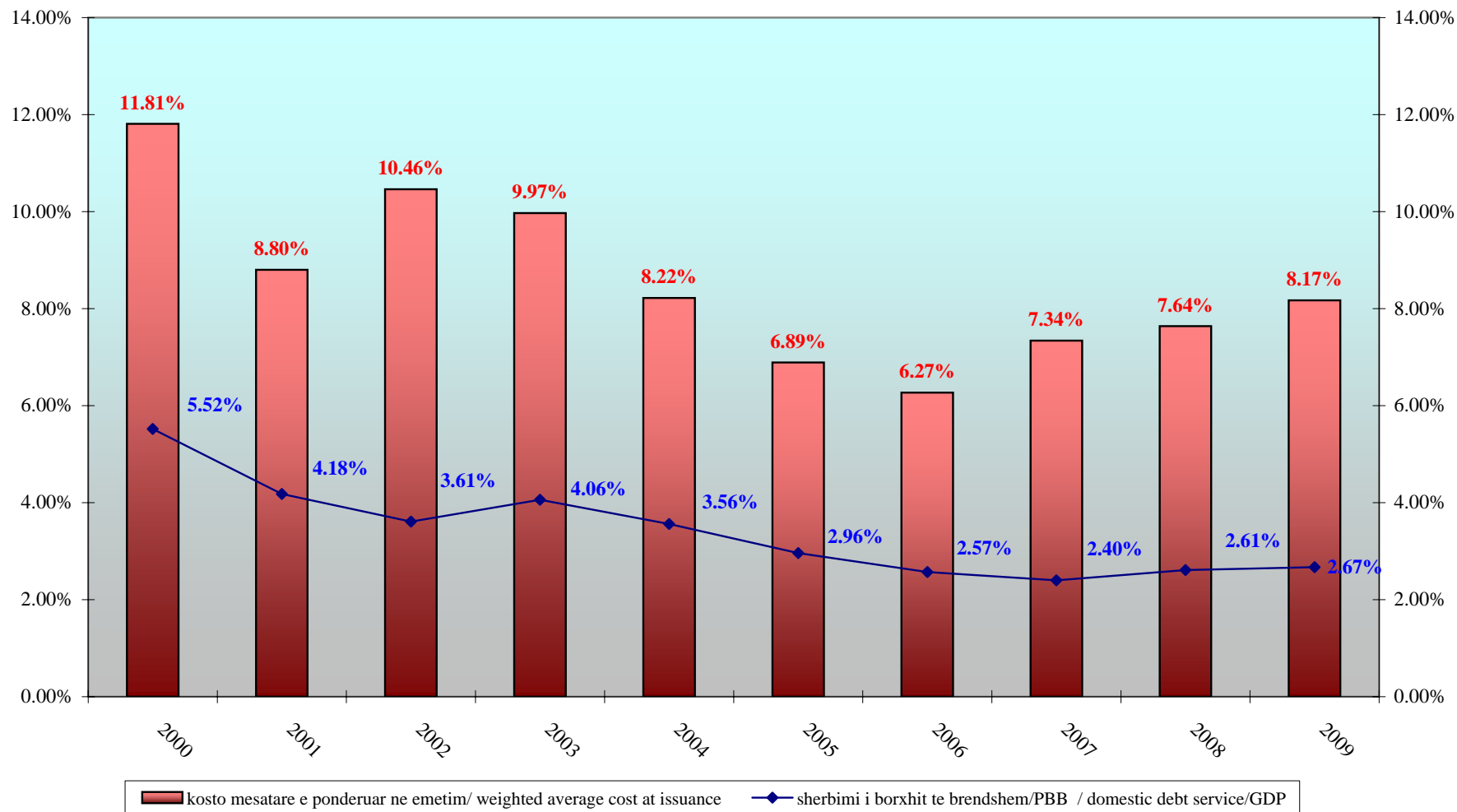
million leke

Yield

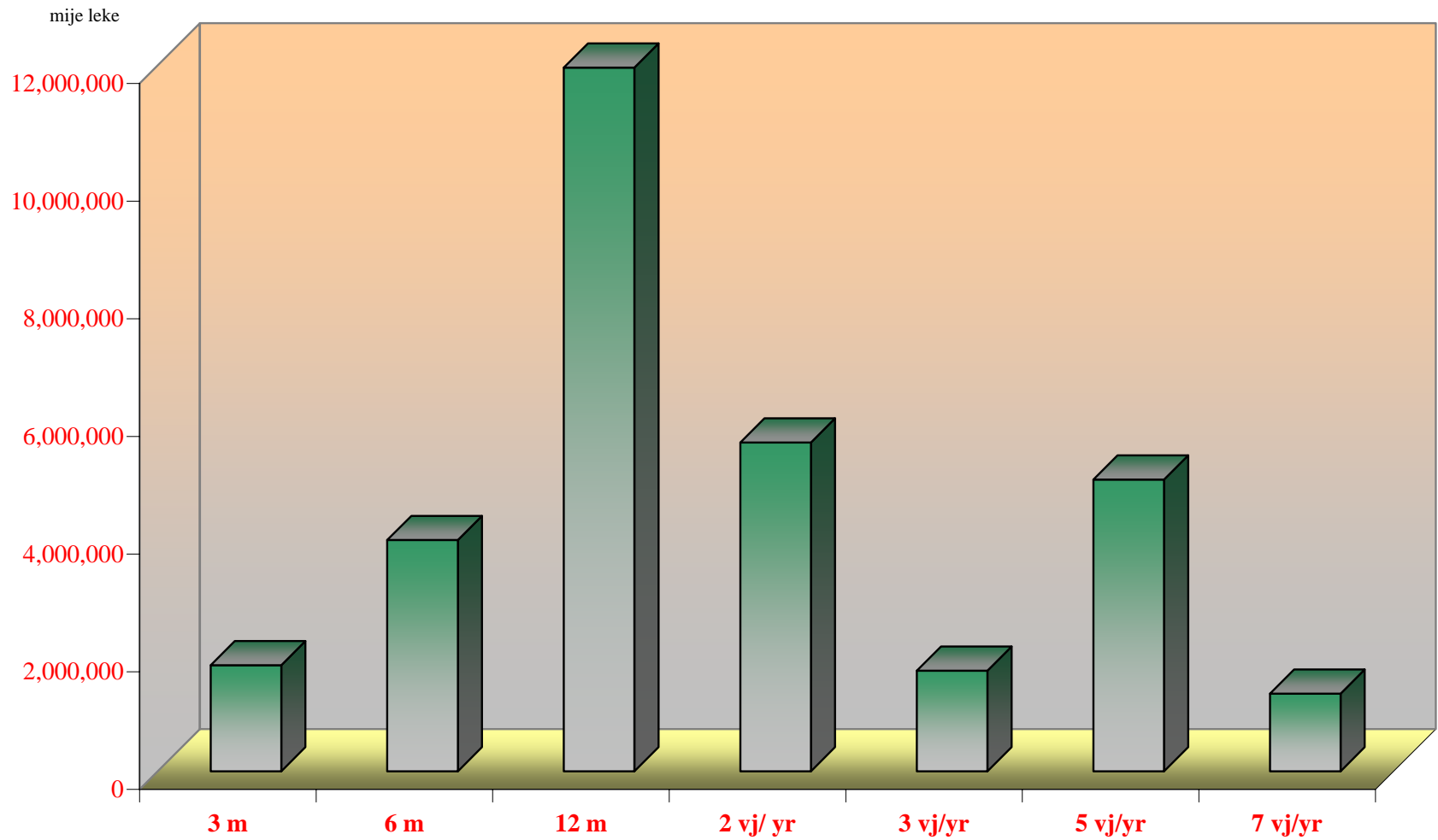




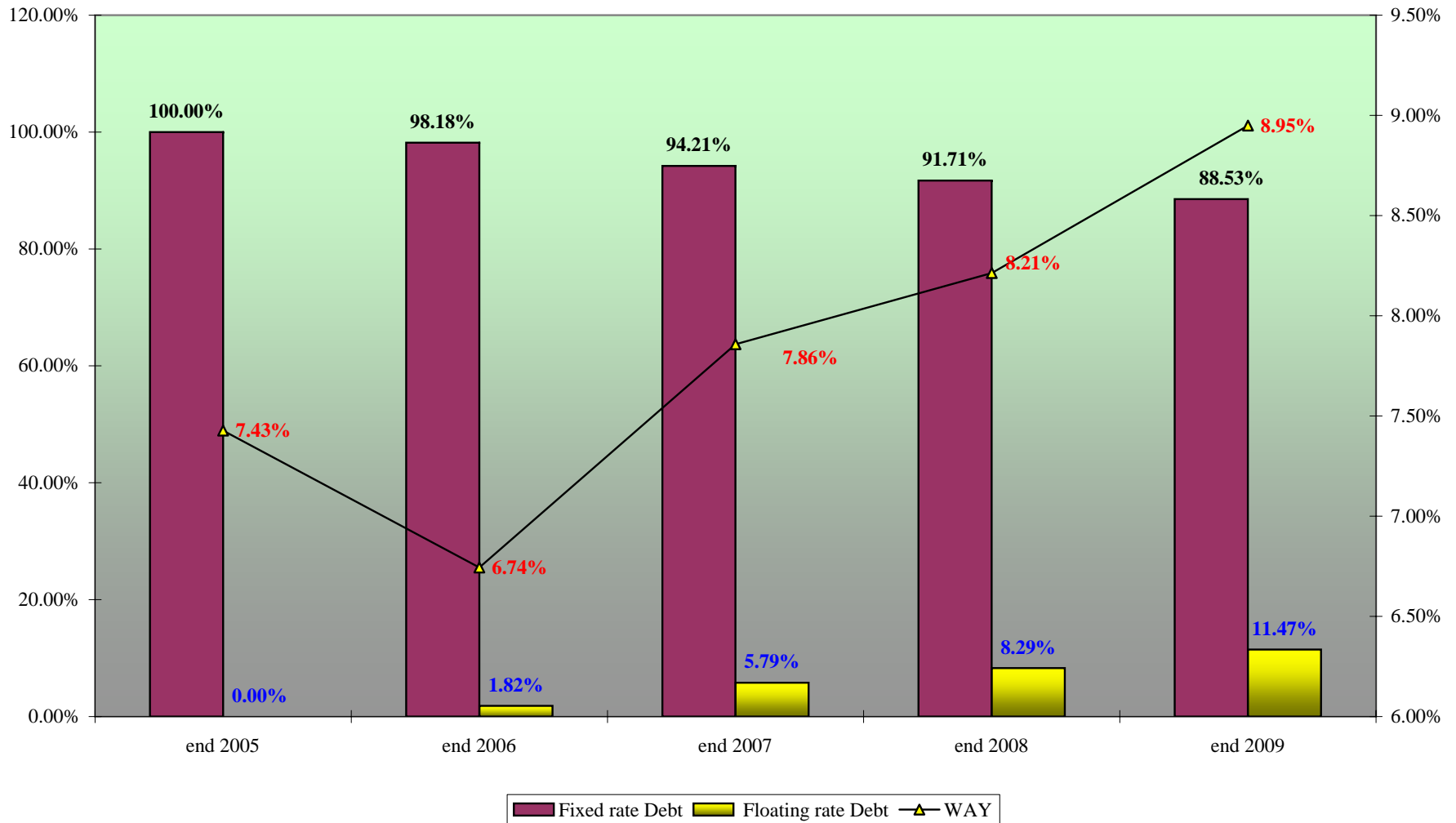
**Sherbimi Borxhit te Brendshem/GDP & Kosto Mesatare e Ponderuar ne Emetim**  
**Domestic Debt Service/GDP & Weighted Average Cost at Issuance**



**Shpenzimet per Interesa per Borxhin e Brendshem Viti 2009**  
**Domestic Debt Service 2009**



**Ecuria e Struktures se Borxhit te Brendshem & Yield-I Mesatar i Ponderuar**  
**Evolution of Domestic Debt Structure and Weighted Average Yield**



**BORXHI I JASHEM SHTETEROR I SHQIPERISE  
TE DHENA PERMBLEDHESE**

**LONG-TERM EXTERNAL DEBT\* OF ALBANIA  
SUMMARIZED DATA**

(EUR'000)

Klasifikimi	Deri ne 31.12.2006 Up to 31.12.2006	2007	2008	2009	GJITHSEJ TOTAL	Classification
<b>I. TE DHENA KUMULATIVE</b>						<b>I. CUMULATIVE DATA (STOCK)</b>
Borxhi Neto	1,176,688.67	1,210,366.79	1,577,887.79	1,938,017.25	1,938,017.25	Debt Outstanding Disbursed (DOD)
Terheqjet	1,547,946.53	1,672,881.44	2,051,935.67	2,447,497.65	2,447,497.65	Drawings
Pagesat e Borxhit	394,722.25	458,267.41	534,089.46	641,003.21	641,003.21	Debt Service
-Principal	201,222.92	241,889.95	287,486.20	344,576.11	344,576.11	-Principal
-Interes	193,499.33	216,377.46	246,603.26	296,427.10	296,427.10	-Interest
Borxhi i nenshkruar i paterhequr	439,263.34	667,173.02	783,754.00	715,066.76	715,066.76	Committed Undisbursed Balance (CUB)
<b>II. TE DHENA VJETORE</b>						<b>II. ANNUAL DATA (FLOWS)</b>
Terheqjet	1,547,946.53	124,934.91	379,054.23	395,561.98	2,447,497.65	Drawings
Pagesat e Borxhit	394,722.25	63,545.16	75,822.05	106,913.75	641,003.21	Debt Service
-Principal	201,222.92	40,667.03	45,596.25	57,089.91	344,576.11	-Principal
-Interes	193,499.33	22,878.13	30,225.80	49,823.84	296,427.10	-Interest

\*) Përfshin borxhin shtetëror dhe shtetëror të garantuar (Tabela I.1 + Tabela I.2)

\*\*) Përfshihen të dhënat për periudhën 1991-2006

\*\*\*) Deri më 31.12.2009

Ne këtë tabelë nuk përfshihen kredia e FMN-se

\*) Includes Central Government and Central Government Guaranteed debt (Table I.1 + Table I.2)

\*\*) Cumulative data (1991-2006)

\*\*) As of December 31, 2009

IMF credit is not included

**BORXHI I JASHEM I QEVERISE QENDRORE  
TE DHENA PERMBLEDHESE**

**CENTRAL GOVERNMENT EXTERNAL DEBT  
SUMMARIZED DATA**

(EUR'000)

Klasifikimi	Deri ne 31.12.2006 Up to 31.12.2006	2007	2008	2009	GJITHSEJ TOTAL	Classification
<b>I. TE DHENA KUMULATIVE</b>						<b>I. CUMULATIVE DATA (STOCK)</b>
<b>Borxhi Neto</b>	969,286.45	985,263.85	1,322,576.71	1,646,188.06	1,646,188.06	<b>Debt Outstanding Disbursed (DOD)</b>
<b>Terheqjet</b>	1,300,767.72	1,391,221.16	1,735,011.25	2,078,475.32	2,078,475.32	<b>Drawings</b>
<b>Pagesat e Borxhit</b>	<u>336,341.10</u>	<u>384,851.56</u>	<u>441,954.91</u>	<u>525,994.41</u>	<u>525,994.41</u>	<b>Debt Service</b>
-Principal	168,559.23	200,556.15	234,717.29	276,766.11	276,766.11	-Principal
-Interes	167,781.87	184,295.41	207,237.62	249,228.30	249,228.30	-Interest
<b>Borxhi i nenshkruar i paterhequr</b>	286,367.28	533,207.86	671,224.72	654,635.40	654,635.40	<b>Committed Undisbursed Balance (CUB)</b>
<b>II. TE DHENA VJETORE</b>						<b>II. ANNUAL DATA (FLOWS)</b>
<b>Terheqjet</b>	1,300,767.72	90,453.44	343,790.09	343,464.07	2,078,475.32	<b>Drawings</b>
<b>Pagesat e Borxhit</b>	<u>336,341.10</u>	<u>48,510.46</u>	<u>57,103.35</u>	<u>84,039.50</u>	<u>525,994.41</u>	<b>Debt Service</b>
-Principal	168,559.23	31,996.92	34,161.14	42,048.82	276,766.11	-Principal
-Interes	167,781.87	16,513.54	22,942.21	41,990.68	249,228.30	-Interest

\*\*) Perfshihen te dhenat per periudhen 1991-2006

\*\*\*) Deri me 31.12.2009

Ne kete tabelë nuk perfshihet kredia e FMN-se

\*\*\*) Cumulative data (1991-2006)

\*\*\*) As of December 31, 2009

IMF credit is not included

**BORXHI I JASHEM I GARANTUAR I SHQIPERISE  
TE DHENA PERMBLEDHESE**

**CENTRAL GOVERNMENT GUARANTEED DEBT  
SUMMARIZED DATA**

(EUR'000)

Klasifikimi	Deri ne 31.12.2006 Up to 31.12.2006	2007	2008	2009	GJITHSEJ TOTAL	Classification
<b>I. TE DHENA KUMULATIVE</b>						<b>I. CUMULATIVE DATA (STOCK)</b>
Borxhi Neto	207,402.22	225,102.94	255,311.08	291,829.19	291,829.19	Debt Outstanding Disbursed (DOD)
Terheqjet	247,178.81	281,660.28	316,924.42	369,022.33	369,022.33	Drawings
<b>Pagesat e Borxhit</b>	<b>58,381.15</b>	<b>73,415.85</b>	<b>92,134.55</b>	<b>115,008.80</b>	<b>115,008.80</b>	<b>Debt Service</b>
-Principal	32,663.69	41,333.80	52,768.91	67,810.00	67,810.00	-Principal
-Interes	25,717.46	32,082.05	39,365.64	47,198.80	47,198.80	-Interest
Borxhi i nenshkruar i paterhequr	152,896.06	133,965.16	112,529.28	60,431.36	60,431.36	Committed Undisbursed Balance (CUB)
<b>II. TE DHENA VJETORE</b>						<b>II. ANNUAL DATA (FLOWS)</b>
Terheqjet	247,178.81	34,481.47	35,264.14	52,097.91	369,022.33	Drawings
<b>Pagesat e Borxhit</b>	<b>58,381.15</b>	<b>15,034.70</b>	<b>18,718.70</b>	<b>22,874.25</b>	<b>115,008.80</b>	<b>Debt Service</b>
-Principal	32,663.69	8,670.11	11,435.11	15,041.09	67,810.00	-Principal
-Interes	25,717.46	6,364.59	7,283.59	7,833.16	47,198.80	-Interest

\*) Përfshihen të dhënat për periudhën 1991-2006

\*\*\*) Deri më 31.12.2009

\*) Cumulative data (1991-2006)

\*\*\*) As of December 31, 2009

**BORXHI I JASHEM\* AFATGJATE I SHQIPERISE**  
**TERHEQJET NE VITE NGA KREDITE E HUAJA SIPAS KREDITOREVE**

**LONG-TERM EXTERNAL PUBLIC DEBT\***  
**DRAWINGS BY YEARS AND BY CREDITORS**

Sipas kreditoreve	Deri ne 31.12.2006 Up to 31.12.2006	2007	2008	2009				TOTALI	By Creditors
				Q1	Q2	Q3	Q4		
-Shumepalesh (I)	910,947.67	98,980.05	112,971.36	41,300.86	43,507.32	32,560.63	19,426.45	1,259,694.34	-Multilateral (I)
CEB	9,975.04	8,400.00	15,409.21	1,838.00	5,900.00	10,400.00	3,690.00	55,612.25	CEB
IBRD	-	3,850.00	8,084.61	724.12	1,629.82	2,515.98	70.78	16,875.31	IBRD
EC	9,000.00	-	-	-	-	-	-	9,000.00	EC
EBRD	81,107.00	14,509.37	24,927.69	13,505.21	11,080.14	5,032.39	2,623.18	152,784.98	EBRD
EIB	99,374.23	30,949.19	31,763.99	12,900.00	9,688.60	4,000.00	1,600.00	190,276.01	EIB
IDA	625,053.85	35,019.72	18,529.78	7,593.95	9,282.89	5,158.74	2,984.97	703,623.90	IDA
IDB	34,065.34	4,941.73	9,447.71	3,033.88	3,667.44	3,673.05	4,429.17	63,258.32	IDB
IFAD	29,729.96	731.69	1,508.25	285.06	307.13	413.76	404.67	33,380.52	IFAD
OPEC	22,642.25	578.35	3,300.12	1,420.64	1,951.30	1,366.71	3,623.68	34,883.05	OPEC
-Dypalesh (II)	545,513.24	25,954.86	36,222.87	16,101.88	26,421.41	11,977.50	11,665.93	673,857.69	-Bilateral (II)
AUSTRIA	4,505.72	-	-	-	-	1,123.20	3,903.42	9,532.34	AUSTRIA
BULLGARI	75.87	-	-	-	-	-	-	75.87	BULGARIA
CEKI	8,492.02	-	-	-	-	-	-	8,492.02	CZECH REP.
GREQI	49,345.60	-	-	-	-	-	-	49,345.60	GREECE
GJERMANI	112,219.57	13,527.34	10,742.53	6,785.61	10,740.74	5,027.83	2,114.66	161,158.28	GERMANY
HUNGARI	11,922.10	-	-	-	-	-	-	11,922.10	HUNGARY
ITALI	134,787.21	6,787.55	17,103.56	5,873.70	12,656.75	2,398.64	2,160.66	181,768.07	ITALY
JAPONI	52,712.70	-	-	-	-	-	-	52,712.70	JAPAN
JUGOSLLAVI	45.29	-	-	-	-	-	-	45.29	YUGOSLAVIA
MAQEDONI	975.62	-	-	-	-	-	-	975.62	MACEDONIA
TURQI	26,863.37	-	-	-	-	-	-	26,863.37	TURKEY
KUVAIT	37,491.47	1,642.41	3,036.11	725.69	356.15	408.85	965.61	44,626.29	KUWAIT
KINE	41,093.78	-	-	-	-	-	-	41,093.78	CHINA
KOREA	18,798.86	3,047.67	205.55	-	-	-	-	22,052.08	SOUTH KOREA
POLONI	918.69	-	-	-	-	-	-	918.69	POLAND
RUMANI	4,501.61	-	-	-	-	-	349.03	4,850.64	ROMANIA
SPANJE	-	949.89	735.51	2,145.04	1,325.04	1,205.78	-	6,361.26	SPAIN
SLOVAKI	4,296.48	-	-	-	-	-	-	4,296.48	SLOVAKIA
SUEDI	3,138.72	-	-	-	-	-	-	3,138.72	SWEDEN
NORVEGJI	28,856.59	-	-	-	-	-	2,172.55	31,029.14	NORWAY
HOLLANDE	-	-	4,399.61	571.84	1,342.73	1,813.20	-	8,127.38	NETHERLANDS
ZVICRA	4,471.97	-	-	-	-	-	-	4,471.97	SWITZERLAND
Kreditore Private (III)	-	-	230,000.00	-	95,000.00	97,600.00	-	422,600.00	Private Creditors (III)
Kreditore Private	-	-	230,000.00	-	95,000.00	97,600.00	-	422,600.00	Private Creditors
-Klubi i Parisit (IV)	91,485.62	-	-	-	-	-	-	91,485.62	-Paris Club (IV)
AUSTRI	8,852.10	-	-	-	-	-	-	8,852.10	AUSTRIA
ANGLI	22.22	-	-	-	-	-	-	22.22	UNITED KINGDOM
DANIMARKE	115.19	-	-	-	-	-	-	115.19	DENMARK
FRANCE	21,849.28	-	-	-	-	-	-	21,849.28	FRANCE
GJERMANI	13,138.90	-	-	-	-	-	-	13,138.90	GERMANY
HOLLANDE	1,178.12	-	-	-	-	-	-	1,178.12	NETHERLANDS
ITALI	7,570.21	-	-	-	-	-	-	7,570.21	ITALY
JAPONI	244.32	-	-	-	-	-	-	244.32	JAPAN
RUSI	38,515.28	-	-	-	-	-	-	38,515.28	RUSSIA
<b>GJITHSEJ (I+II+III+IV)</b>	<b>1,547,946.53</b>	<b>124,934.91</b>	<b>379,054.23</b>	<b>57,402.74</b>	<b>164,928.73</b>	<b>142,138.13</b>	<b>31,092.38</b>	<b>2,447,497.65</b>	<b>TOTAL (I+II+III+IV)</b>

\*) Përfshin borxhin shtetëror dhe shtetëror të garantuar (Tabela II.1 + Tabela II.2)

Ne kete tabelë nuk përfshihet kredia e FMN-se

\*) Deri me 31.12.2009

\*) Includes Central Government and Central Government Guaranteed debt

IMF credit is not included

\*\*) As of December 31, 2009

**BORXHI I JASHEM I QEVERISE QENDRORE  
TERHEQJET NE VITE NGA KREDITE E HUAJA SIPAS KREDITOREVE**

**CENTRAL GOVERNMENT EXTERNAL DEBT  
DRAWINGS BY YEARS AND BY CREDITORS**

(EURO'000)

Sipas kreditoreve	Deri ne 31.12.2006 Up to 31.12.2006	2007	2008	2009				TOTALI	By Creditors
				Q1	Q2	Q3	Q4		
-Shumepalesh (I)	817,175.33	72,611.01	83,582.11	22,447.41	33,514.28	30,583.20	17,145.43	1,077,058.77	-Multilateral (I)
CEB	9,975.04	8,400.00	15,409.21	1,838.00	5,900.00	10,400.00	3,690.00	55,612.25	CEB
IBRD	-	3,850.00	8,084.61	724.12	1,629.82	2,515.98	70.78	16,875.31	IBRD
EC	9,000.00							9,000.00	EC
EBRD	16,986.68	7,140.33	10,538.44	4,051.76	1,087.10	3,054.96	1,942.16	44,801.43	EBRD
EIB	69,722.21	11,949.19	16,763.99	3,500.00	9,688.60	4,000.00		115,623.99	EIB
IDA	625,053.85	35,019.72	18,529.78	7,593.95	9,282.89	5,158.74	2,984.97	703,623.90	IDA
IDB	34,065.34	4,941.73	9,447.71	3,033.88	3,667.44	3,673.05	4,429.17	58,829.15	IDB
IFAD	29,729.96	731.69	1,508.25	285.06	307.13	413.76	404.67	33,380.52	IFAD
OPEC	22,642.25	578.35	3,300.12	1,420.64	1,951.30	1,366.71	3,623.68	34,883.05	OPEC
-Dypalesh (II)	392,152.91	17,842.43	30,207.98	12,230.14	16,014.96	8,520.33	10,408.32	487,377.07	-Bilateral (II)
AUSTRIA	4,505.72					1,123.20	3,903.42	9,532.34	AUSTRIA
BULLGARI	75.87							75.87	BULGARIA
CEKI	8,492.02							8,492.02	CZECH REP.
GREQI	40,541.49							40,541.49	GREECE
GJERMANI	69,199.77	9,427.23	6,083.30	2,913.87	334.29	1,570.66	857.05	90,386.17	GERMANY
HUNGARI	11,922.10							11,922.10	HUNGARY
ITALI	88,611.28	5,822.90	15,953.45	5,873.70	12,656.75	2,398.64	2,160.66	133,477.38	ITALY
JAPONI	16,151.07							16,151.07	JAPAN
JUGOSLLAVI	45.29							45.29	YUGOSLAVIA
MAQEDONI	975.62							975.62	MACEDONIA
TURQI	26,863.37							26,863.37	TURKEY
KUVAIT	37,491.47	1,642.41	3,036.11	725.69	356.15	408.85	965.61	44,626.29	KUWAIT
KINE	41,093.78							41,093.78	CHINA
POLONI	918.69							918.69	POLAND
RUMANI	4,501.61							4,501.61	ROMANIA
SPANJE	-	949.89	735.51	2,145.04	1,325.04	1,205.78	349.03	6,710.29	SPAIN
SLOVAKI	4,296.48							4,296.48	SLOVAKIA
SUEDI	3,138.72							3,138.72	SWEDEN
NORVEGJI	28,856.59							28,856.59	NORWAY
HOLLANDE	-	-	4,399.61	571.84	1,342.73	1,813.20	2,172.55	10,299.93	NETHERLANDS
ZVICRA	4,471.97							4,471.97	SWITZERLAND
Kreditor Privat (III)			230,000.00	-	95,000.00	97,600.00	-	422,600.00	Private Creditors (III)
Kreditor Privat			230,000.00	-	95,000.00	97,600.00	-	422,600.00	Private Creditors
-Klubi i Parisit (IV)	91,439.48							91,439.48	-Paris Club (IV)
AUSTRI	8,852.10	-						8,852.10	AUSTRIA
ANGLI	22.22	-						22.22	UNITED KINGDOM
DANIMARKE	115.19	-						115.19	DENMARK
FRANCE	21,849.28	-						21,849.28	FRANCE
GJERMANI	13,138.90	-						13,138.90	GERMANY
HOLLANDE	1,178.12	-						1,178.12	NETHERLANDS
ITALI	7,570.21	-						7,570.21	ITALY
JAPONI	198.18							198.18	JAPAN
RUSI	38,515.28							38,515.28	RUSSIA
<b>GJITHSEJ (I+II+III+IV)</b>	<b>1,300,767.72</b>	<b>90,453.44</b>	<b>343,790.09</b>	<b>34,677.55</b>	<b>144,529.24</b>	<b>136,703.53</b>	<b>27,553.75</b>	<b>2,078,475.32</b>	<b>TOTAL (I+II+III+IV)</b>

Ne kete table nuk perfshihet kredia e FMN-se

\*) Deri me 31.12.2009

IMF credit is not included

\*\*) As of December 31, 2009



**BORXHI I JASHEM I GARANTUAR I SHQIPERISE  
TERHEQJET NE VITE NGA KREDITE E HUAJA SIPAS KREDITOREVE**

**CENTRAL GOVERNMENT GUARANTEED DEBT  
DRAWINGS BY YEARS AND BY CREDITORS**

(EUR'000)

Sipas kreditoreve	Deri ne 31.12.2006 Up to 31.12.2006	2007	2008	2009				GJITHSEJ TOTAL	By Creditors
				Q1	Q2	Q3	Q4		
-Shumepalesh (I)	93,772.34	26,369.04	29,249.25	18,853.45	9,993.04	1,977.43	2,281.02	182,635.57	-Multilateral (I)
EBRD	64,120.32	7,369.04	14,389.25	9,453.45	9,993.04	1,977.43	681.02	107,983.55	EBRD
EIB	29,652.02	19,000.00	15,000.00	9,400.00			1,600.00	74,652.02	EIB
-Dypalesh (II)	153,360.33	8,112.43	6,014.89	3,871.74	10,406.45	3,457.17	1,257.61	186,480.62	-Bilateral (II)
GJERMANI	43,019.80	4,100.11	4,659.23	3,871.74	10,406.45	3,457.17	1,257.61	70,772.11	GERMANY
GREQI	8,804.11	-	-					8,804.11	GREECE
ITALI	46,175.93	964.65	1,150.11					48,290.69	ITALY
JAPONI	36,561.63	-	-					36,561.63	JAPAN
KOREA	18,798.86	3,047.67	205.55					22,052.08	SOUTH KOREA
-Klubi Parisit (III)	46.14	-	-	-	-	-		46.14	-Paris Club (III)
JAPONI	46.14	-	-	-				46.14	JAPAN
<b>GJITHSEJ (I+II+III)</b>	<b>247,178.81</b>	<b>34,481.47</b>	<b>35,264.14</b>	<b>22,725.19</b>	<b>20,399.49</b>	<b>5,434.60</b>	<b>3,538.63</b>	<b>369,022.33</b>	<b>TOTAL (I+II+III)</b>

\*) Deri me 31.12.2009

\*\*) As of December 31, 2009

**BORXHI I JASHEM\* AFATGJATE I SHQIPERISE  
TERHEQJET NE VITE SIPAS SEKTOREVE EKONOMIKE**

**LONG-TERM EXTERNAL DEBT\* OF ALBANIA  
DRAWINGS BY ECONOMIC SECTORS**

Sipas sektoreve ekonomike	Deri ne 31.12.2006 Up to 31.12.2006	2007	2008	2009				(EUR'000)	By Economic Sectors
				Q1	Q2	Q3	Q4	GJITHSEJ	
								TOTAL	
ADMINISTRATA SHTETERORE	31,162.53	1,721.83	(2.29)	-	-	-	-	32,882.07	Public Administration
ARESIMI	26,595.41	9,720.18	9,720.00	-	2,728.31	1,400.00	-	50,163.90	Education
BILANCI I PAGESAVE	18,350.79	-	-	-	-	-	-	18,350.79	Balance of Payment
BUJQESI, UJITJE	114,761.59	8,539.93	10,032.29	1,813.92	1,223.25	1,719.18	1,522.78	139,612.94	Agriculture-Irrigation
ENERGJETIKE	262,035.20	38,727.96	44,800.72	34,350.05	33,958.03	11,586.90	5,863.45	431,322.31	Energy
IMPORT MALLRASH DHE PAJISJESH	54,735.77	-	-	-	-	-	-	54,735.77	Import of Goods and Services
INDUSTRI E LEHTE	2,556.46	-	-	-	-	-	-	2,556.46	Light Industry
INFRASTRUKTURE URBANE DHE RURALE	45,517.08	3,246.07	7,213.27	559.50	372.02	428.08	3,417.76	60,753.78	Urban and Rural Infrastructure
KLUBI I PARISIT DHE RISKEDULIME TE TJERA	206,313.72	-	-	-	-	-	-	206,313.72	Paris Club & Other Rescheduling
MBESHTETJE PER BUXHETIN	234,584.78	7,340.24	-	-	95,000.00	97,600.00	-	434,525.02	Budgetary Support
MBROJTJA	8,895.42	-	-	-	-	-	-	8,895.42	Defence
MBROJTJA E MJEDISIT	1,385.73	1,129.51	260.57	254.67	-	-	-	3,030.48	Environmental Protection
PYJE	7,224.11	-	-	-	-	-	-	7,224.11	Forestry
SHENDETESI	39,579.82	6,696.88	2,733.76	1,592.64	6,373.00	2,062.93	5,277.67	64,316.70	Health
SIGURIME SHOQ./TREGU I PUNES	11,480.86	1,718.78	2,825.25	112.31	24.40	-	-	29.02	Social Safety/Labor Market
STREHIMI	14,066.73	-	2,189.21	1,338.00	-	3,000.00	690.00	21,283.94	Housing
TELEKOMUNIKACION	14,692.75	-	-	-	-	-	-	14,692.75	Telecommunication
TRANSPORT	236,960.34	29,878.33	278,460.27	14,892.36	15,331.97	20,055.34	10,986.28	606,564.89	Transport
TRANSPORTI AJROR	23,638.12	-	-	-	-	-	-	23,638.12	Air Transport
TRANSPORTI HEKURUDHOR	3,098.74	-	-	-	-	-	-	3,098.74	Rail Transport
UJESJELLESA/KANALIZIME	90,825.96	14,833.50	13,798.65	2,171.65	9,906.06	2,764.03	2,744.02	137,043.87	Water Supply and Sewerage
ZHVILL. SEK.PRIVAT	41,454.78	650.00	5,132.42	32.60	(295.46)	107.91	156.76	47,239.01	Enterprise Sector Development
TE TJERA	26,534.40	-	-	-	-	-	-	26,534.40	Other
ZHVILLIMI RURAL	31,495.81	731.69	2,030.10	285.06	307.13	1,413.76	404.67	36,668.22	Rural Development
<b>GJITHSEJ</b>	<b>1,547,946.90</b>	<b>124,934.90</b>	<b>379,194.22</b>	<b>57,402.76</b>	<b>164,928.71</b>	<b>142,138.13</b>	<b>31,092.41</b>	<b>2,447,638.03</b>	<b>TOTAL</b>

\*) Perfshin borxhin shteteror dhe shteteror te garantuar

Ne kete tabele nuk perfshihet kredia e FMN-se

\*\*\*) Deri me 30.06.2009

\*) Includes Central Government and Central Government Guaranteed debt  
IMF credit is not included

\*\*) As of June 30, 2009

**BORXHI I JASHEM\* AFATGJATE I SHQIPERISE**  
**BORXHI NETO SIPAS KREDITOREVE**

**LONG-TERM EXTERNAL PUBLIC DEBT\***  
**DEBT OUTSTANDING DISBURSED BY CREDITORS**

(EUR'000)

Sipas kreditoreve	31.12.2007	31.12.2008	31.12.2009	By Creditors
-Shumepalesh (I)	810,935.86	919,365.11	1,017,810.29	-Multilateral (I)
CEB	17,592.98	33,174.51	54,853.49	CEB
EBRD	61,566.76	77,854.04	97,931.72	EBRD
EC	9,000.00	9,000.00	9,000.00	EC
EIB	106,701.83	134,174.08	155,552.38	EIB
IBRD	3,850.00	11,934.67	16,875.39	IBRD
IDA	549,791.26	577,308.87	587,685.19	IDA
IDB	28,401.90	37,846.45	50,782.36	IDB
IFAD	24,362.51	26,027.40	26,623.69	IFAD
OPEC	9,668.62	12,045.09	18,506.07	OPEC
-Dypalesh (II)	323,505.25	357,769.66	408,668.71	-Bilateral (II)
GJERMANI	107,815.99	116,958.59	139,153.74	GERMANY
GREQI	13,194.74	12,943.47	12,692.19	GREECE
AUSTRI			5,026.62	AUSTRIA
ITALI	117,741.41	129,962.73	147,731.26	ITALY
JAPONI	36,386.64	45,045.92	41,566.81	JAPAN
KINE	1,263.33	1,319.90	1,290.35	CHINA
KUVAIT	21,790.77	23,734.21	23,031.92	KUWAIT
NORVEGJI	7,557.76	6,141.48	4,288.58	NORWAY
HOLLANDE		4,399.60	9,984.19	NETHERLANDS
SPANJE	948.85	1,740.07	6,461.02	SPAIN
KOREA	16,805.76	15,523.69	17,442.03	SOUTH KOREA
Kreditore private (III)		230,000.00	422,600.00	Private Creditors (III)
KREDITORE PRIVATE		230,000.00	422,600.00	PRIVATE CREDITORS
-Borxhi i riskeduluar (IV) (A+B)	75,925.68	70,753.02	88,938.25	-Rescheduled Debt (IV) (A+B)
-Klubi i Parisit (A)	27,358.05	27,214.00	25,601.18	-Paris Club (A)
GJERMANI	997.02	332.34	-	GERMANY
ITALI	2,752.13	2,661.91	2,493.83	ITALY
RUSI	23,608.90	24,219.75	23,107.35	RUSSIA
-Te tjere (B)	48,567.63	43,539.02	63,337.07	-Others (B)
TURQI	12,635.33	11,648.06	9,869.01	TURKEY
GREQI			27,701.60	GREECE
KINE	17,955.14	16,414.27	13,754.44	CHINA
HUNGARI	5,783.78	5,035.65	3,938.34	HUNGARY
GJERMANI	2,210.45	1,473.63	736.82	GERMANY
RUMANIA	2,757.61	2,496.95	2,065.51	ROMANIA
SLLOVAKI	2,408.44	2,156.82	1,757.12	SLOVAK REP.
ÇEKI	4,816.88	4,313.64	3,514.23	CZECH REP.
<b>GJITHSEJ (I+II+III+IV)</b>	<b>1,210,366.79</b>	<b>1,577,887.79</b>	<b>1,938,017.25</b>	<b>TOTAL (I+II+III+IV)</b>

\*) Përfshin borxhin shtetëror dhe shtetëror të garantuar

Ne kete tabelë nuk përfshihet kredia e FMN-se

\*\*) Deri me 31.12.2009

\*) Includes Central Government and Central Government Guaranteed debt

IMF credit is not included

\*\*) As of 31 December , 2009

**BORXHI I JASHEM I QEVERISE QENDRORE  
BORXHI NETO SIPAS KREDITOREVE**

**CENTRAL GOVERNMENT EXTERNAL DEBT  
DEBT OUTSTANDING DISBURSED BY CREDITORS**

(EUR'000)

Sipas kreditoreve	31.12.2007	31.12.2008	31.12.2009	By Creditors
-Shumepalesh (I)	725,886.21	812,873.39	889,208.85	-Multilateral (I)
CEB	17,592.98	33,174.51	54,853.49	CEB
EBRD	21,294.89	30,417.88	37,779.00	EBRD
EC	9,000.00	9,000.00	9,000.00	EC
EIB	61,924.05	75,118.52	87,103.66	EIB
IBRD	3,850.00	11,934.67	16,875.39	IBRD
IDA	549,791.26	577,308.87	587,685.19	IDA
IDB	28,401.90	37,846.45	50,782.36	IDB
IFAD	24,362.51	26,027.40	26,623.69	IFAD
OPEC	9,668.62	12,045.09	18,506.07	OPEC
-Dypalesh (II)	183,451.96	208,950.30	245,440.96	-Bilateral (II)
GJERMANI	66,059.46	71,173.46	76,659.19	GERMANY
GREQI	4,390.63	4,139.36	3,888.08	GREECE
AUSTRI			5,026.62	AUSTRIA
ITALI	70,976.46	83,410.08	102,980.00	ITALY
JAPONI	10,464.70	12,892.14	11,831.01	JAPAN
KINE	1,263.33	1,319.90	1,290.35	CHINA
KUVAIT	21,790.77	23,734.21	23,031.92	KUWAIT
NORVEGJI	7,557.76	6,141.48	4,288.58	NORWAY
HOLLAND		4,399.60	9,984.19	NETHERLANDS
SPANJA	948.85	1,740.07	6,461.02	SPAIN
Kreditore Private (III)		230,000.00	422,600.00	Private Creditors(III)
KREDITORE PRIVATE		230,000.00	422,600.00	PRIVATE CREDITORS
-Borxhi i riskeduluar (IV) (A+B)	75,925.68	70,753.02	88,938.25	-Rescheduled Debt (IV) (A+B)
-Klubi i Parisit (A)	27,358.05	27,214.00	25,601.18	-Paris Club (A)
GJERMANI	997.02	332.34	-	GERMANY
ITALI	2,752.13	2,661.91	2,493.83	ITALY
RUSI	23,608.90	24,219.75	23,107.35	RUSSIA
-Te tjere (B)	48,567.63	43,539.02	63,337.07	-Others (B)
TURQI	12,635.33	11,648.06	9,869.01	TURKEY
GREQI			27,701.60	GREECE
KINE	17,955.14	16,414.27	13,754.44	CHINA
HUNGARI	5,783.78	5,035.65	3,938.34	HUNGARY
GJERMANI	2,210.45	1,473.63	736.82	GERMANY
RUMANIA	2,757.61	2,496.95	2,065.51	ROMANIA
SLLOVAKI	2,408.44	2,156.82	1,757.12	SLOVAK REP.
ÇEKI	4,816.88	4,313.64	3,514.23	CZECH REP.
<b>GJITHSEJ (I+II+III+IV)</b>	<b>985,263.85</b>	<b>1,322,576.71</b>	<b>1,646,188.06</b>	<b>TOTAL (I+II+III+IV)</b>

Ne kete table nuk perfshihet kredia e FMN-se

\*\*) Deri me 31.12.2009

IMF credit is not included

\*\*) As of December 31, 2009

**BORXHI I JASHEM I GARANTUAR I SHQIPERISE**  
**BORXHI NETO SIPAS KREDITOREVE**

**CENTRAL GOVERNMENT GUARANTEED DEBT**  
**DEBT OUTSTANDING DISBURSED BY CREDITORS**

(EUR'000)

Sipas kreditoreve	31.12.2007	31.12.2008	31.12.2009	By Creditors
-Shumepalesh (I)	85,049.65	106,491.72	128,601.44	-Multilateral (I)
EBRD	40,271.87	47,436.16	60,152.72	EBRD
EIB	44,777.78	59,055.56	68,448.72	EIB
-Dypalesh (II)	140,053.29	148,819.36	163,227.75	-Bilateral (II)
GJERMANI	41,756.53	45,785.13	62,494.55	GERMANY
GREQI	8,804.11	8,804.11	8,804.11	GREECE
ITALI	46,764.95	46,552.65	44,751.26	ITALY
JAPONI	25,921.94	32,153.78	29,735.80	JAPAN
KOREA	16,805.76	15,523.69	17,442.03	SOUTH KOREA
<b>GJITHSEJ (I+II)</b>	<b>225,102.94</b>	<b>255,311.08</b>	<b>291,829.19</b>	<b>TOTAL (I+II)</b>

\*) Deri me 31.12.2009

\*) As of December 31, 2009

**BORXHI I JASHEM\* AFATGJATE I SHQIPERISE**  
**BORXHI NETO SIPAS MONEDHAVE**

**LONG-TERM EXTERNAL PUBLIC DEBT\***  
**DOD BY CURRENCY**

(EUR'000)

Monedha Currency	Q1 2009		Q2 2009		Q3 2009		Q4 2009	
	Amount	%	Amount	%	Amount	%	Amount	%
ACU	41,801.81	2.54	43,579.51	2.42	46,372.34	2.41	50,782.36	2.62
EUR	799,728.00	48.52	936,568.14	51.96	1,063,809.51	55.38	1,069,808.00	55.20
JPY	39,599.12	2.40	40,933.00	2.27	42,174.97	2.20	41,566.81	2.14
KWD	24,355.95	1.48	23,640.39	1.31	22,899.54	1.19	23,031.92	1.19
KRW	16,439.42	1.00	15,471.86	0.86	16,685.77	0.87	17,442.03	0.90
SDR	620,767.20	37.66	617,206.15	34.24	607,323.68	31.62	614,308.87	31.70
USD	105,504.06	6.40	125,101.26	6.94	121,692.07	6.33	121,077.24	6.25
<b>TOTAL</b>	<b>1,648,195.56</b>	<b>100.00</b>	<b>1,802,500.31</b>	<b>100.00</b>	<b>1,920,957.88</b>	<b>100.00</b>	<b>1,938,017.23</b>	<b>100.00</b>

\*) Përfshin borxhin e jashtëm shtetëror dhe shtetëror të garantuar

\*\*\*) Deri më 31.12.2009

Nuk përfshihet kredia e FMN-se

\*) Includes external public and external publicly guaranteed debt

\*\*\*) As of December 31, 2009

IMF credit is not included

**BORXHI I JASHEM\* AFATGJATE I SHQIPERISE  
PJESA E PATERHEQUR E KREDIVE**

**LONG-TERM EXTERNAL PUBLIC DEBT\*  
COMMITTED UNDISBURSED BALANCE**

(EUR'000)

<b>Sipas kreditoreve</b>	<b>2007</b>	<b>2008</b>	<b>2009</b>	<b>By Creditors</b>
<b>-Shumepalesh (I)</b>	<b>399,826.54</b>	<b>429,740.29</b>	<b>405,728.11</b>	<b>-Multilateral (I)</b>
CEB	38,133.88	38,824.70	62,014.81	CEB
EBRD	64,437.26	75,877.47	78,268.63	EBRD
EIB	117,828.60	109,064.61	80,876.01	EIB
IBRD	31,050.00	22,965.33	23,496.61	IBRD
IDA	102,653.07	122,255.69	100,268.73	IDA
IDB	22,725.11	41,685.62	34,972.64	IDB
IFAD	5,485.39	4,107.14	9,015.40	IFAD
OPEC	17,513.23	14,959.73	16,815.28	OPEC
<b>-Dypalesh (II)</b>	<b>267,346.48</b>	<b>354,013.71</b>	<b>309,338.65</b>	<b>-Bilateral (II)</b>
GJERMANI	58,199.01	54,956.48	46,744.08	GERMANY
GREQI			-	GREECE
ITALI	198,279.22	181,127.43	158,037.67	ITALY
JAPONI	-	87,545.68	85,880.63	JAPAN
KUVAIT	5,300.48	17,467.30	14,067.26	KUWAIT
AUSTRI			2,461.38	AUSTRIA
HOLLANDE		8,047.93	2,147.63	NETHERLANDS
SPANJA	5,376.84	4,868.89	-	SPAIN
KOREA	190.93	-		SOUTH KOREA
<b>GJITHSEJ (I+II)</b>	<b>667,173.02</b>	<b>783,754.00</b>	<b>715,066.76</b>	<b>TOTAL (I+II)</b>

\*) Perfshin borxhin shtetedor dhe shtetedor te garantuar

\*\*) Deri me 31.12.2009

Ne kete tabele nuk perfshihet kredia e FMN-se

\*) Includes Central Government and Central Government Guaranteed debt

\*\*) As of December 31, 2009

IMF credit is not included

**BORXHI I JASHEM I QEVERISE QENDRORE  
PJESA E PATERHEQUR E KREDIVE**

**CENTRAL GOVERNMENT EXTERNAL DEBT  
COMMITTED UNDISBURSED BALANCE**

(EUR'000)

<b>Sipas kreditoreve</b>	<b>2007</b>	<b>2008</b>	<b>2009</b>	<b>By Creditors</b>
<b>-Shumepalesh (I)</b>	<b>316,848.95</b>	<b>362,151.96</b>	<b>371,244.72</b>	<b>-Multilateral (I)</b>
CEB	38,133.88	38,824.70	62,014.81	CEB
EBRD	7,459.67	19,289.14	43,785.24	EBRD
EIB	91,828.60	98,064.61	80,876.01	EIB
IBRD	31,050.00	22,965.33	23,496.61	IBRD
IDA	102,653.07	122,255.69	100,268.73	IDA
IDB	22,725.11	41,685.62	34,972.64	IDB
IFAD	5,485.39	4,107.14	9,015.40	IFAD
OPEC	17,513.23	14,959.73	16,815.28	OPEC
<b>-Dypalesh (II)</b>	<b>216,358.91</b>	<b>309,072.76</b>	<b>283,390.68</b>	<b>-Bilateral (II)</b>
GJERMANI	23,720.07	25,136.77	35,917.35	GERMANY
GREQI	-	-	-	GREECE
ITALI	181,961.52	166,006.19	142,916.43	ITALY
JAPONI	-	87,545.68	85,880.63	JAPAN
KUVAIT	5,300.48	17,467.30	14,067.26	KUWAIT
AUSTRI	-	-	2,461.38	AUSTRIA
HOLLANDE	-	8,047.93	2,147.63	NEITHERLANDS
SPANJA	5,376.84	4,868.89	-	SPAIN
<b>GJITHSEJ (I+II)</b>	<b>533,207.86</b>	<b>671,224.72</b>	<b>654,635.40</b>	<b>TOTAL (I+II)</b>

\*) Deri me 31.12.2009

Ne kete tebele nuk perfshihet kredia e FMN-se

\*) As of December 31, 2009

IMF credit is not included



**BORXHI I JASHEM I GARANTUAR I SHQIPERISE  
PJESA E PATERHEQUR E KREDIVE**

**CENTRAL GOVERNMENT GUARANTEED DEBT  
COMMITTED UNDISBURSED BALANCE**

(EUR'000)

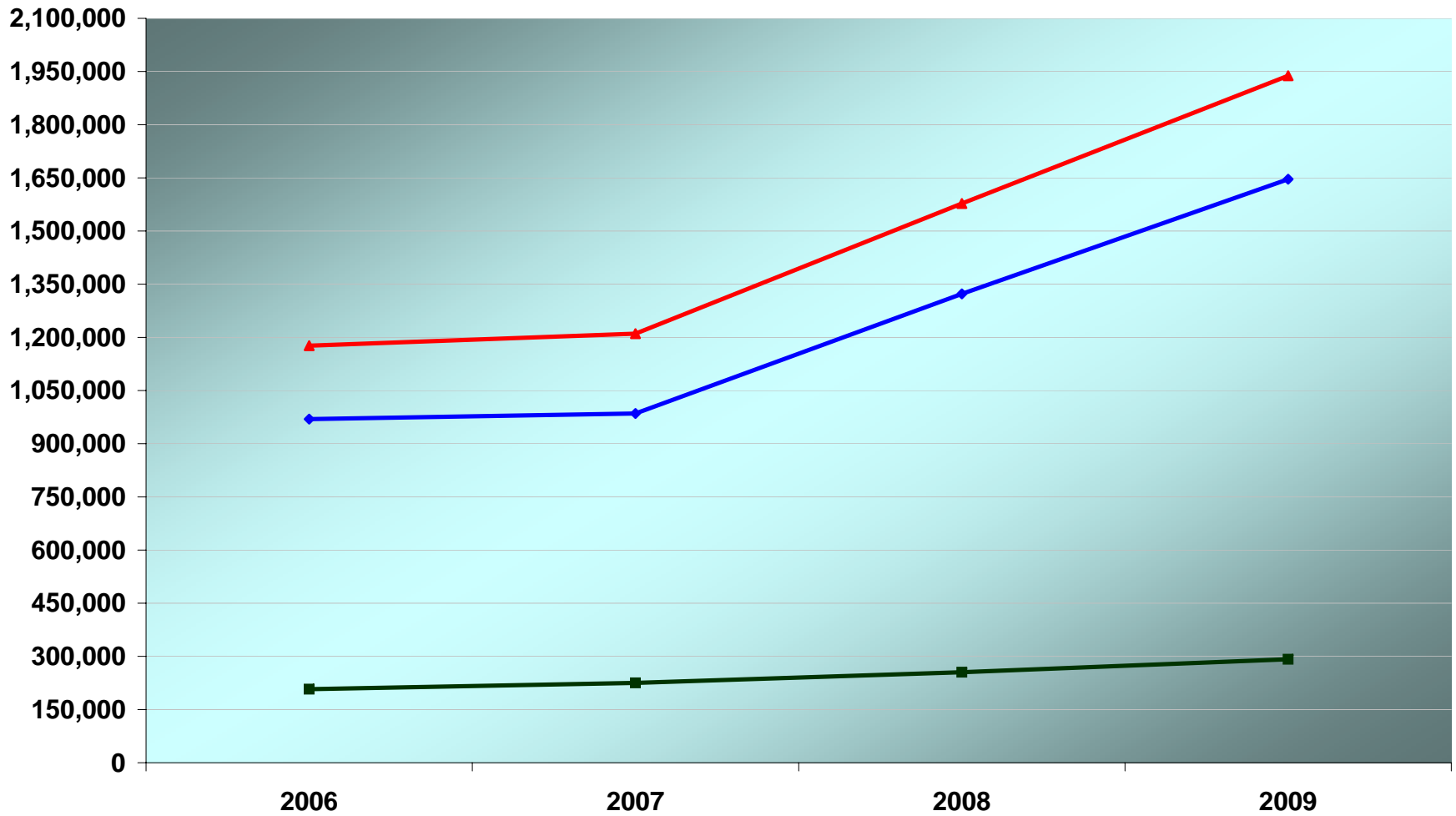
<b>Sipas kreditoreve</b>	<b>2007</b>	<b>2008</b>	<b>2009</b>	<b>By Creditors</b>
-Shumepalesh (I)	82,977.59	67,588.33	34,483.39	-Multilateral (I)
EBRD	56,977.59	56,588.33	34,483.39	EBRD
EIB	26,000.00	11,000.00	-	EIB
-Dypalesh (II)	50,987.57	44,940.95	25,947.97	-Bilateral (II)
GJERMANI	34,478.94	29,819.71	10,826.73	GERMANY
ITALI	16,317.70	15,121.24	15,121.24	ITALY
KOREA	190.93	-	-	SOUTH KOREA
<b>GJITHSEJ (I+II)</b>	<b>133,965.16</b>	<b>112,529.28</b>	<b>60,431.36</b>	<b>TOTAL (I+II)</b>

\*) Deri me 31.12.2009

\*) As of December 31, 2009

Euro'000

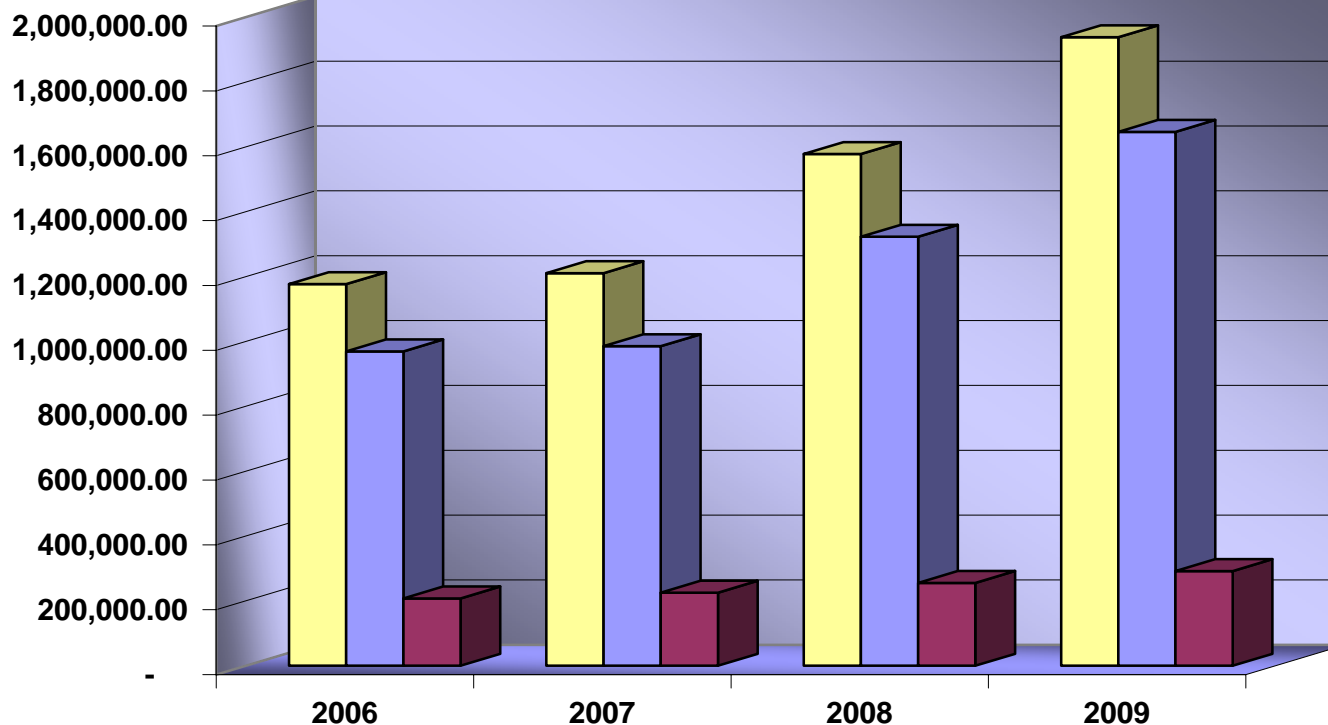
### Paraqitja Grafike e Ecurise se Stokut te Borxhit te Jashtem External Outstanding Debt



Stoku Shteteror Public Debt Outstanding Stoku i Garantuar Guaranteed Debt Outstanding Stoku Total Total Debt Outstanding

**Paraqitja Grafike e Ecurise se Stokut te Borxhit te Jashtem**  
**External Outstanding Debt**

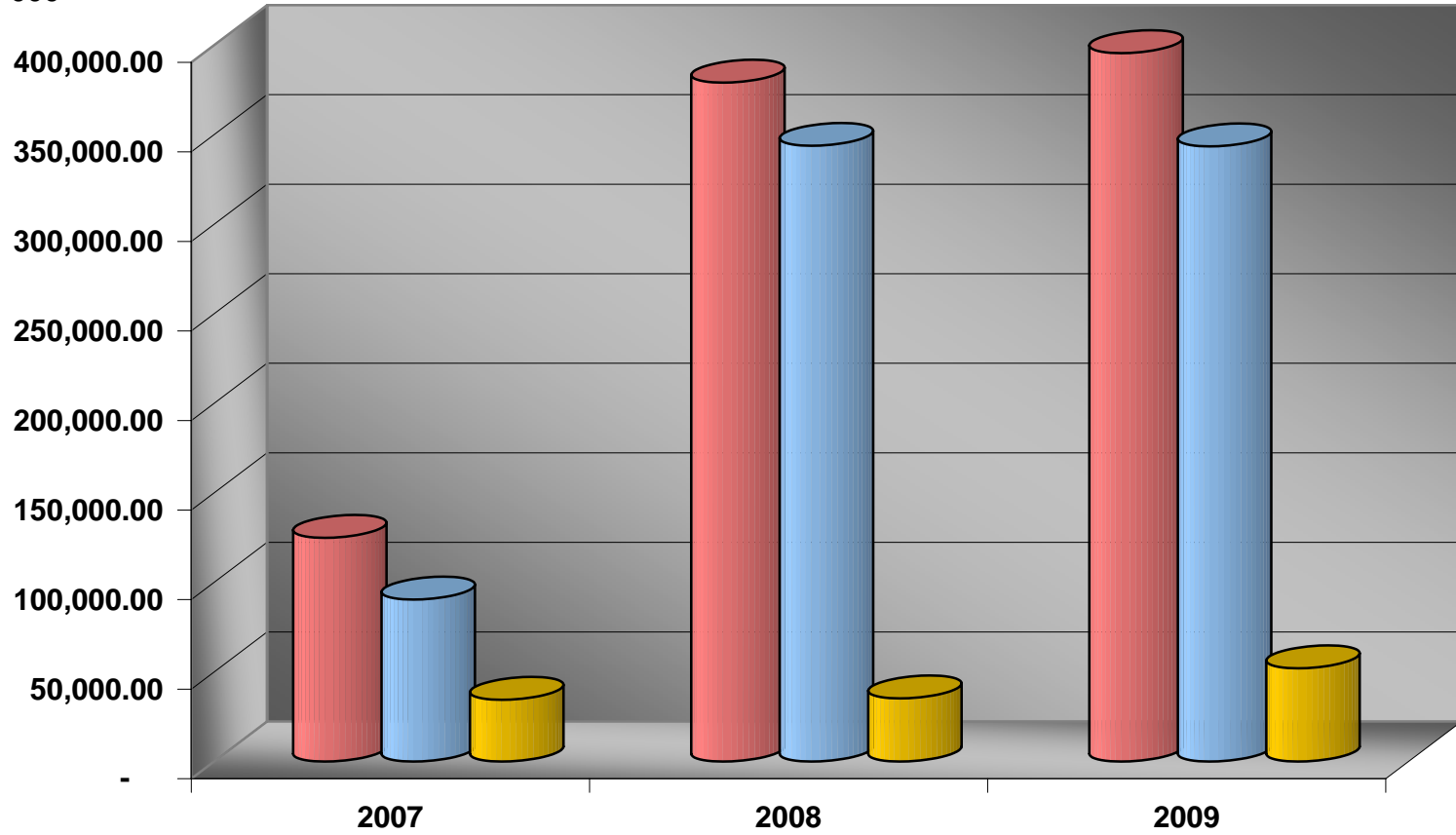
Euro'000



■ Stoku Total Total Debt outstanding ■ Stoku Shteteror Public Debt Outstanding ■ Stoku Garantuar Guaranteed Debt Outstanding

**Ecuria e Disbursimeve te Borxhit te Jashtem**  
**External Debt Drawings**

Euro'000



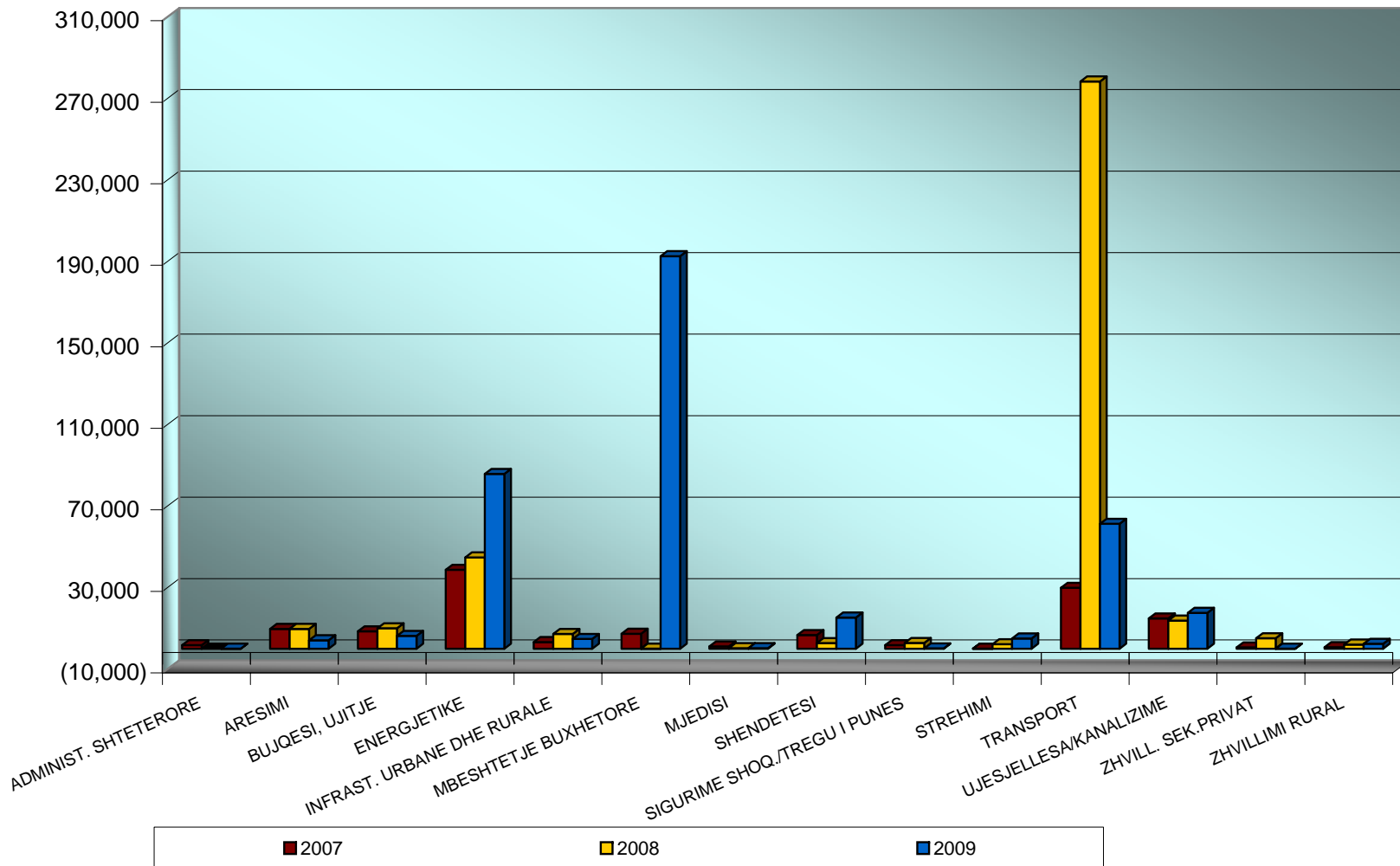
■ Disbursime Total Total Drawings

■ Shteteror Public Debt

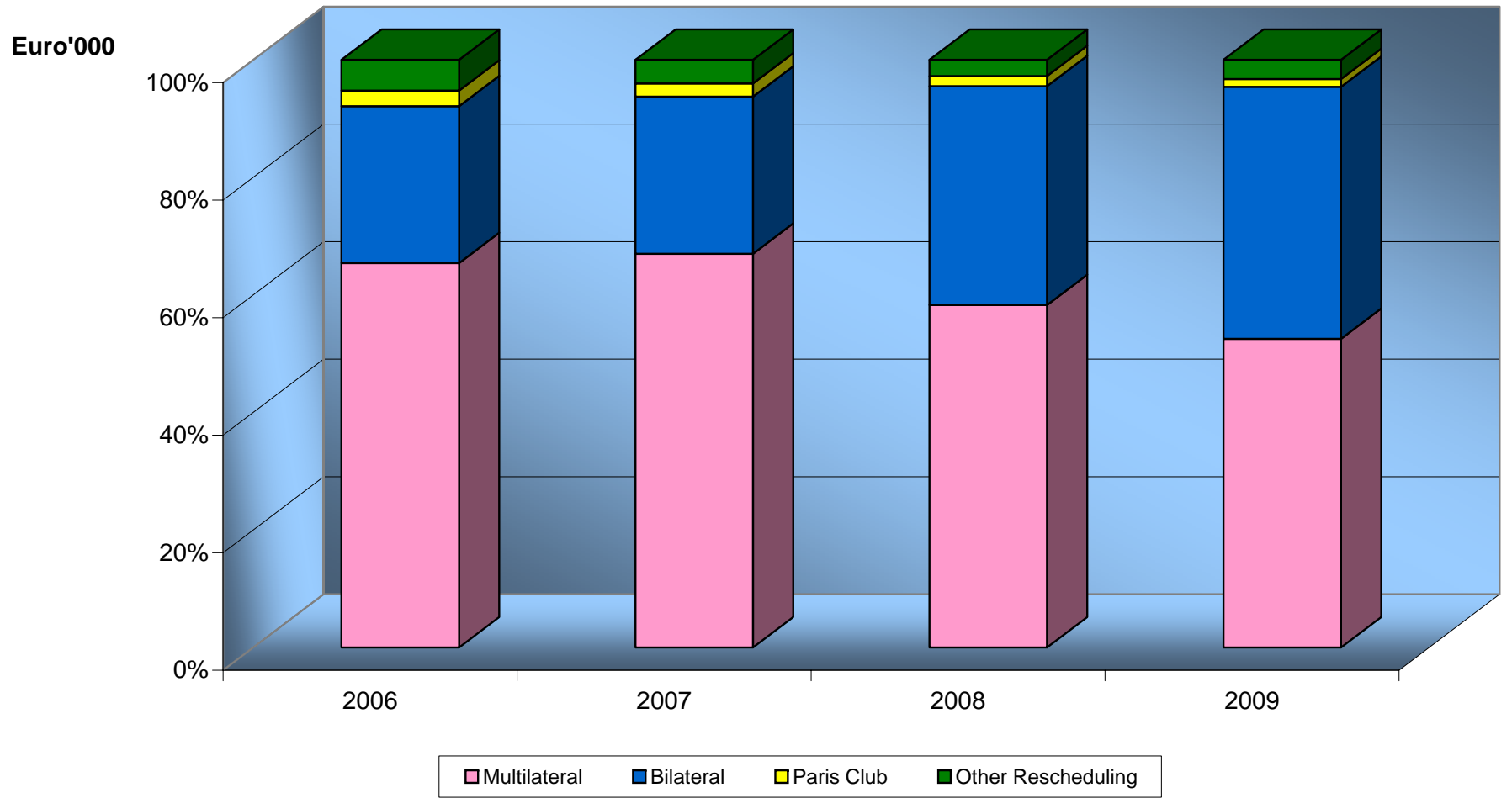
■ Garanci Guaranteed

### Disbursimet e Borxhit te Jashtem sipas Sektoreve Ekonomike External Debt Drawings by Economic Sectors

Euro'000

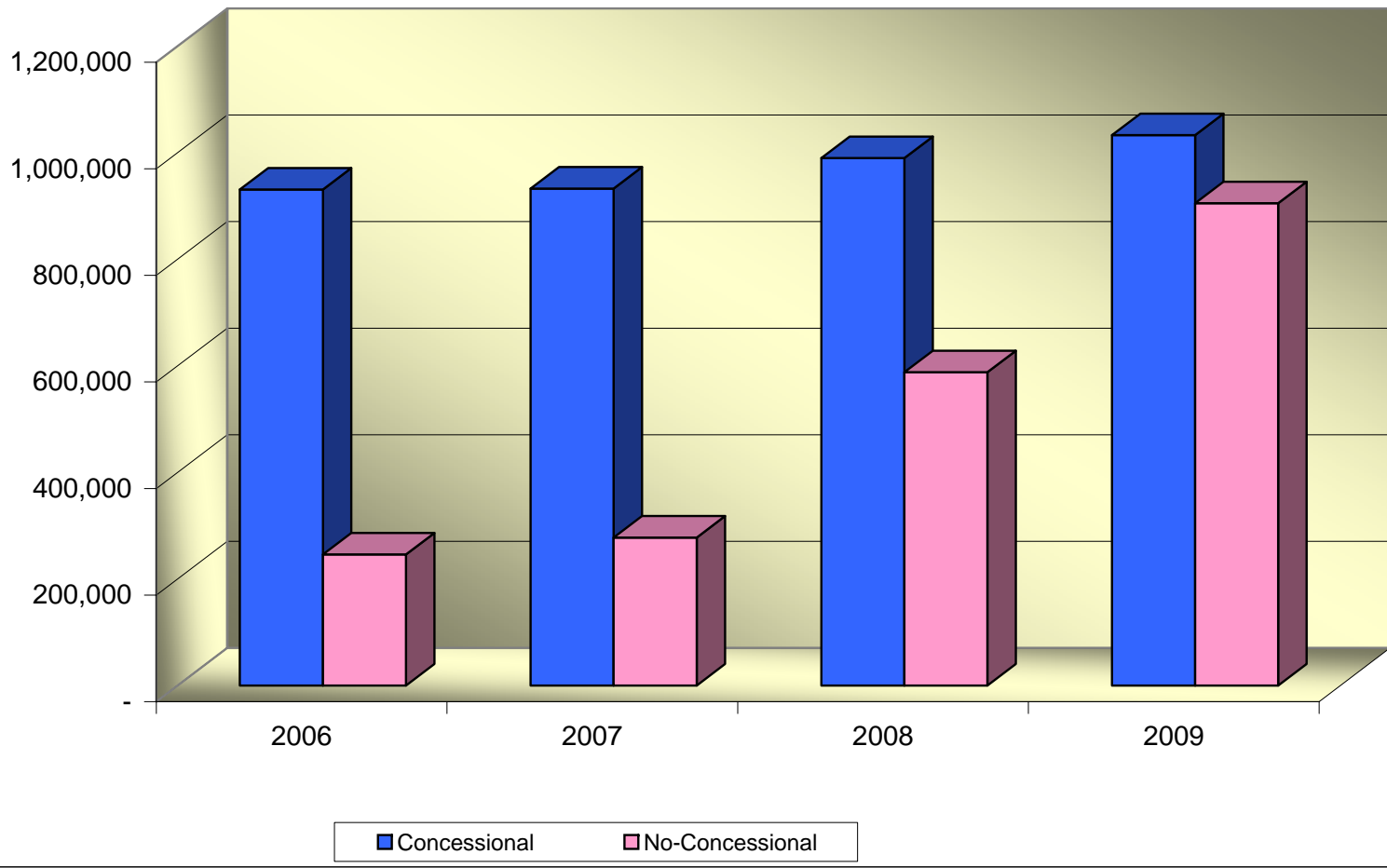


### Stoku i Borxhit te Jashtem sipas tipit te kreditorit Debt Outstanding by Creditor Type



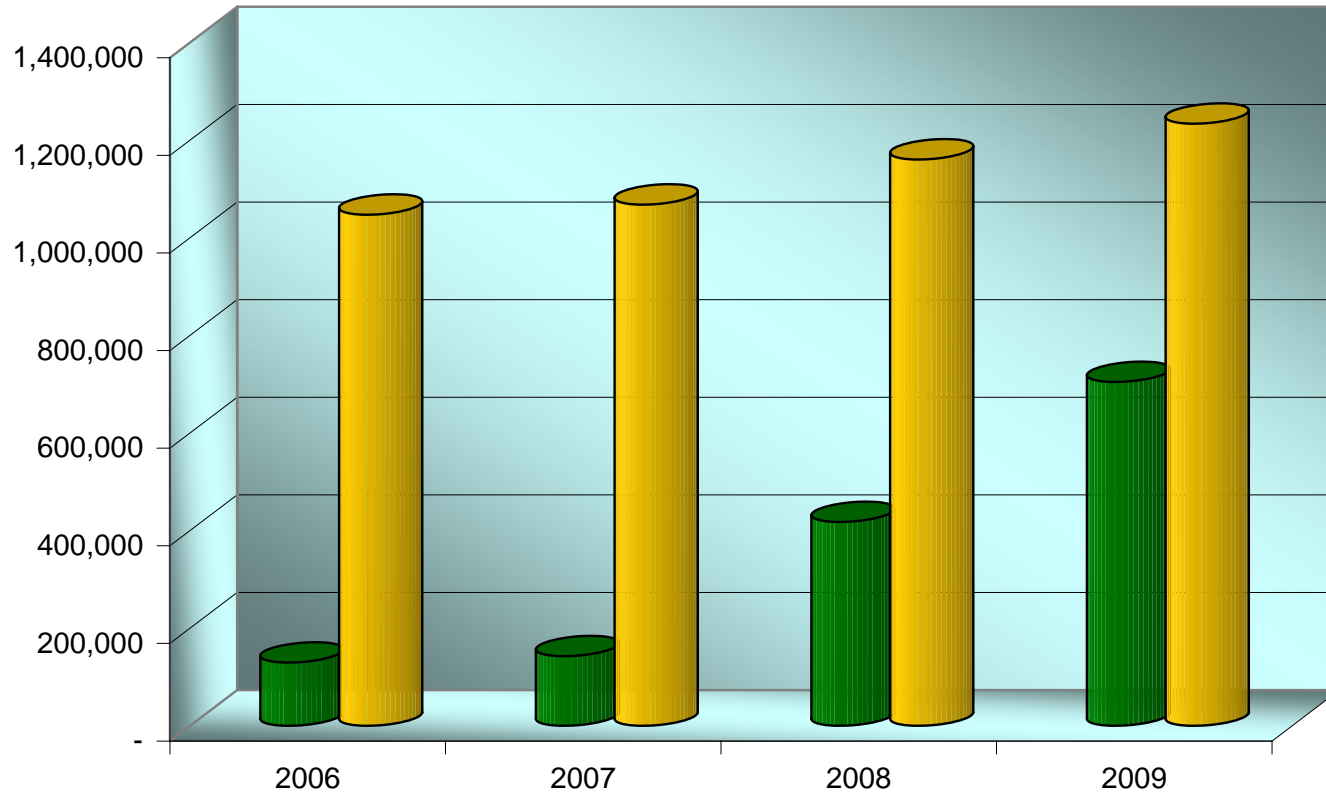
### Stoku i Borxhit te Jashtem sipas Koncesionalitetit Debt Outstanding by Concessionality

Euro'000



### Stoku i Borxhit te Jashtem sipas interesit Debt Outstanding by Interest Type

Euro'000

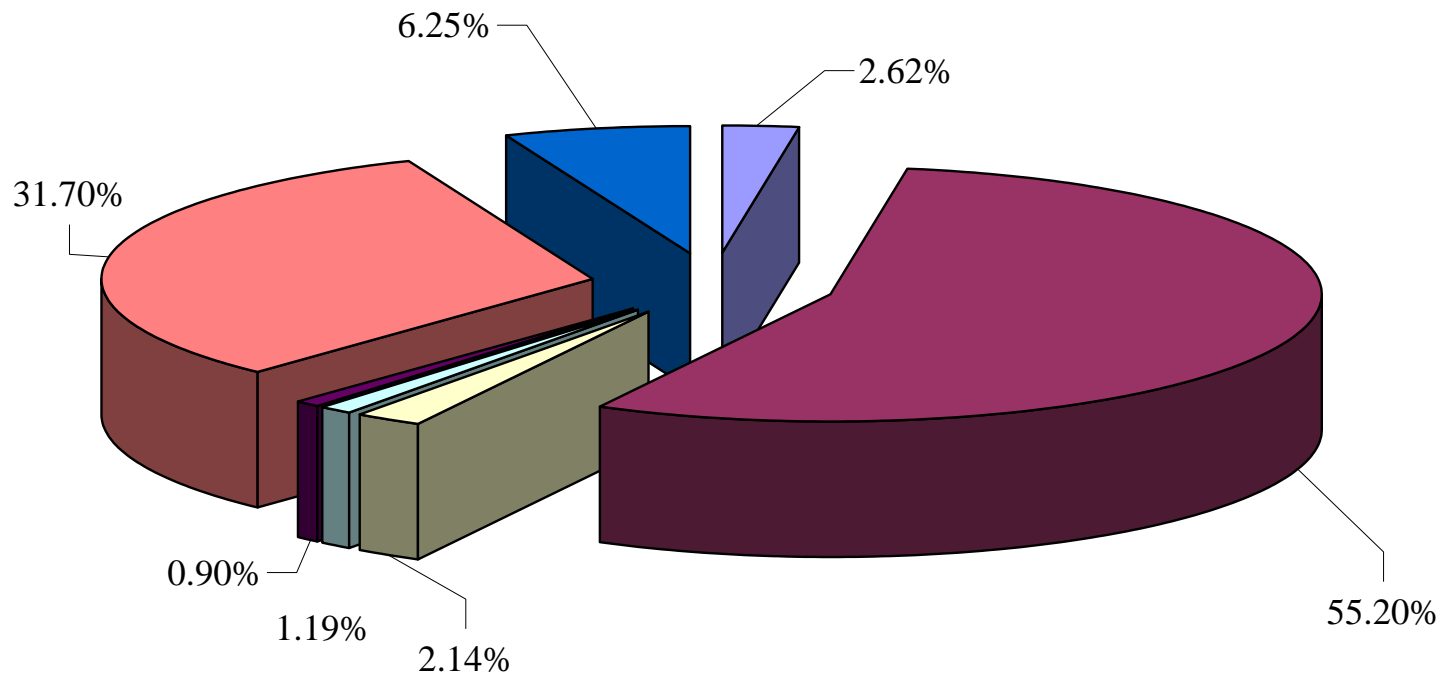


■ Int. Variabel

■ Int. Fix



Stoku i Borxhit te Jashtem sipas monedhave 2009  
External Debt Outstanding by Currency 2009



■ ACU ■ EUR ■ JPY ■ KWD ■ KRW ■ SDR ■ USD