



REPUBLIKA E SHQIPERISE

Siperfaqja (ne kilometra katrore)	28,748
Gjatesia e vijes kufitare (ne Km)	1,094
Popullsia (ne mije banore)	3,182
Kryeqyteti	Tirana
PBB per fryme ne 2006 ne USD	2,854
Monedha vendase	Lek

Kontakt adrese:

Tel: +355 4 2281009

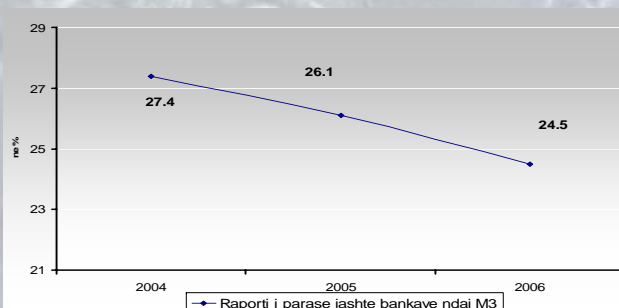
E-mail: elami@minfin.gov.al

www.minfin.gov.al

[MONETAR]

Normat e ritjes vjetore te treguesve kryesore monetare

	2004	2005	2006	Niveli 2006 (miliarde leke)
Paraja jashte bankave	10.3	8.4	9.1	163,264.3
Depozitat totale	14.7	15.9	18.9	503,203.2
-Depozita ne leke	12.9	8.5	13.5	314,108.6
-Depozita ne valute	19.2	33.3	29.0	189,094.6
M1	19.8	31.5	8.4	242,390.7
M2	12.0	8.4	12.0	477,372.8
M3	13.5	13.9	16.3	666,467.4
Baza monetare	18.8	17.0	9.8	161,217.6



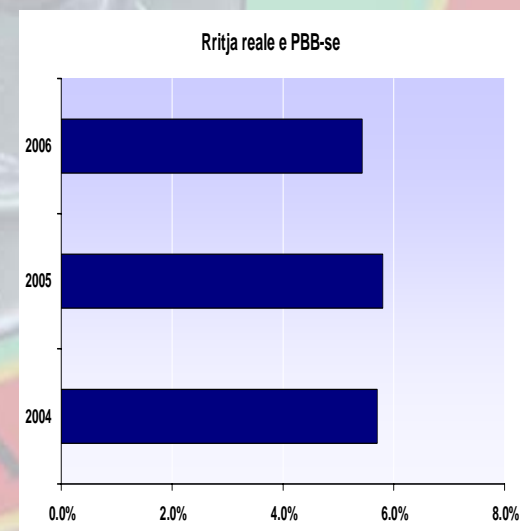
	Ne million leke		
	2004	2005	2006
Paraja jashte bankave	138,093	149,671	163,264
Agregati M3	503,231	572,983	666,467
Raporti i parase jashte bankave ndaj M3	27.4	26.1	24.5

MINISTRIA E FINANCEVE
DREJTORIA E MAKROEKONOMISE



REPUBLIKA E SHQIPERISE
MINISTRIA E FINANCEVE

TREGUESIT
KRYESORE MAKROEKONOMIKE
VITI 2006



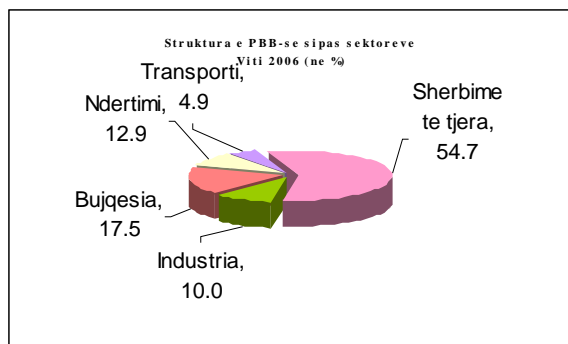
MINISTRIA E FINANCEVE
DREJTORIA E MAKROEKONOMISE

Treguesit kryesore makroekonomike

[MAKRO]

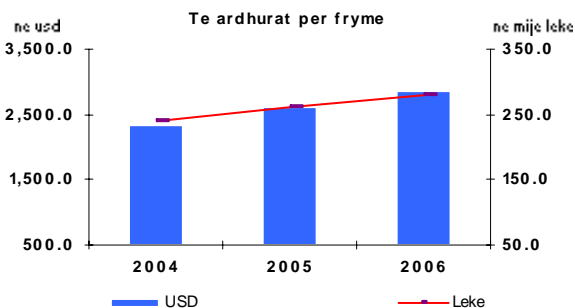
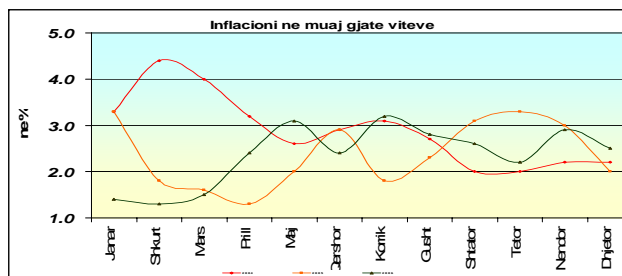
2006/2005
Ne perqindje

- Rritja nominale e PPB-se 8.3
- Rritja reale e PBB-se 5.4
- Rritja e PBB-se per fryme ne leke 8.3
- Inflacioni mesatar vjetor 2.4
- Inflacioni fund viti 2.5
- Niveli i papunesise 13.8
- Rritja e eksporteve 17.6
- Eksportet ne PBB 8.8
- Rritja e importeve 14.1
- Importet ne PBB 31.9
- Deficiti i llogarise korente ne PBB -6.6



Inflacioni vjetor sipas muajve

	2004	2005	2006
Janar	3.3	3.3	1.4
Shkurt	4.4	1.8	1.3
Mars	4.0	1.6	1.5
Prill	3.2	1.3	2.4
Maj	2.6	2.0	3.1
Qershor	2.9	2.9	2.4
Korrik	3.1	1.8	3.2
Gusht	2.7	2.3	2.8
Shtator	2.0	3.1	2.6
Tetor	2.0	3.3	2.2
Nendor	2.2	3.0	2.9
Dhjetor	2.2	2.0	2.5



MINISTRIA E FINANCAVE
DREJTORIA E MAKROEKONOMISE

MINISTRIA E FINANCAVE
DREJTORIA E MAKROEKONOMISE

[FISKAL]

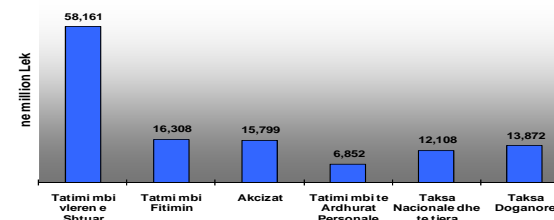
2010
ne % te PBB-se

- Te ardhurat buxhetore 26.6
- Te ardhurat tatimore 23.6
- Te ardhurat nga tatimet dhe doganat 18.2
- Shpenzimet buxhetore 29.7
- Shpenzimet korente 24.6
- Shpenzimet kapitale 5.5
- Deficiti 3.1
- Financimi i brendeshem i deficitit 2.3
- Financimi i jashtem i deficitit 0.8

TREGUESIT FISKALE (NE MILLION LEK)

	2004	2005	2006
TOTALI I TE ARDHURAVE	184,355	204,163	229,444
I. Ndhimat	2,392	6,168	8,025
II. Te ardhura tatimore	165,975	183,816	205,523
1 Nga Tatimet dhe doganat	123,101	135,605	155,102
2 Te ardhura nga Pushteti Lokal	9,613	12,019	11,112
3 Te ardh Buxh. Pavarur (kontribute)	33,261	36,192	39,309
III. Te ardhura Jotatimore	15,989	14,178	15,895
TOTALI I SHPENZIMEVE	222,439	232,339	258,816
I. Shpenzime Korrente	184,173	193,964	204,860
1 Personeli	48,998	53,674	56,709
2 Interesat	28,423	26,029	25,006
3 Shpenzime Operative Mirembajtje	23,974	24,515	22,794
4 Subvencionet	5,116	3,653	3,835
Shpenzime per Sig.Sociale she			
5 transferime te tjera	50,250	55,876	60,029
6 Shpenzime te tjera	11,507	10,218	13,775
7 Buxheti lokal	15,904	19,999	22,713
II. Shpenzime Kapitale	38,266	38,375	51,108
III. Te tjera (transferata etj)	-	-	2,848
DEFICITI	(38,083)	(28,176)	(29,372)

Te ardhurat nga Tatim Doganat 2006



MINISTRIA E FINANCAVE
DREJTORIA E MAKROEKONOMISE